



SEP 2001

New
Issue

1367.2

STATE AND REGIONAL INDICATORS

VICTORIA

EMBARGO: 11:30AM (CANBERRA TIME) MON 22 OCTOBER 2001

CONTENTS

	<i>page</i>
Notes	2
Overview	3
TABLES	
List of tables	13
Summary of statistical indicators: State comparison	15
State final demand	16
Population	18
Labour market	19
Price indexes	27
Business expectations	31
Finance	32
Construction	36
Motor vehicle registrations	43
Retail	45
Tourism	48
Production	49
Trade	51
Natural resources	53

- For further information about these and related statistics, contact the National Information and Referral Service on 1300 135 070, or Bruce Fraser on Melbourne 03 9615 7495.

NOTES

FORTHCOMING ISSUES	<table border="0"> <thead> <tr> <th style="text-align: left;"><i>ISSUE</i></th> <th style="text-align: left;"><i>RELEASE DATE</i></th> </tr> </thead> <tbody> <tr> <td>December 2001</td> <td>23 January 2002</td> </tr> <tr> <td>March 2002</td> <td>18 April 2002</td> </tr> </tbody> </table>	<i>ISSUE</i>	<i>RELEASE DATE</i>	December 2001	23 January 2002	March 2002	18 April 2002																						
<i>ISSUE</i>	<i>RELEASE DATE</i>																												
December 2001	23 January 2002																												
March 2002	18 April 2002																												
SEASONAL ADJUSTMENT	<p>Seasonal adjustment is a means of removing the estimated effects of normal seasonal variations from economic time series so that the effects of other influences are obvious. Seasonal variations are the systematic (though not necessarily regular) intra-year movements of economic time series. These are often the result of non-economic phenomena, such as climatic changes and regular religious festivals, e.g. Christmas and Easter.</p>																												
TREND ESTIMATE	<p>Smoothing seasonally adjusted series produces a measure of trend by removing the impact of the irregular component of the series. The trend estimates are derived by applying a 13-term Henderson weighted moving average to the respective seasonally adjusted series. Readers are reminded that trend estimates are subject to revision as subsequent months' data become available.</p>																												
CHANGES IN THIS ISSUE	<p>There are no changes in this issue.</p>																												
SYMBOLS AND OTHER USAGES	<table border="0"> <tr> <td>AHECC</td> <td>Australian Harmonised Export Commodity Classification</td> </tr> <tr> <td>ANZSIC</td> <td>Australian and New Zealand Standard Industrial Classification</td> </tr> <tr> <td>ML</td> <td>Megalitres</td> </tr> <tr> <td>n.a.</td> <td>not available</td> </tr> <tr> <td>n.e.c.</td> <td>not elsewhere classified</td> </tr> <tr> <td>n.e.s.</td> <td>not elsewhere specified</td> </tr> <tr> <td>n.p.</td> <td>not available for publication but included in totals where applicable</td> </tr> <tr> <td>n.y.a.</td> <td>not yet available</td> </tr> <tr> <td>p</td> <td>preliminary — figure or series subject to revision</td> </tr> <tr> <td>SITC</td> <td>Standard International Trade Classification</td> </tr> <tr> <td>WHO</td> <td>World Health Organisation</td> </tr> <tr> <td>*</td> <td>estimate has a relative standard error greater than 25% and is therefore subject to sampling variability too high for most practical uses</td> </tr> <tr> <td>. .</td> <td>not applicable</td> </tr> <tr> <td>—</td> <td>nil or rounded to zero (including null cells)</td> </tr> </table>	AHECC	Australian Harmonised Export Commodity Classification	ANZSIC	Australian and New Zealand Standard Industrial Classification	ML	Megalitres	n.a.	not available	n.e.c.	not elsewhere classified	n.e.s.	not elsewhere specified	n.p.	not available for publication but included in totals where applicable	n.y.a.	not yet available	p	preliminary — figure or series subject to revision	SITC	Standard International Trade Classification	WHO	World Health Organisation	*	estimate has a relative standard error greater than 25% and is therefore subject to sampling variability too high for most practical uses	. .	not applicable	—	nil or rounded to zero (including null cells)
AHECC	Australian Harmonised Export Commodity Classification																												
ANZSIC	Australian and New Zealand Standard Industrial Classification																												
ML	Megalitres																												
n.a.	not available																												
n.e.c.	not elsewhere classified																												
n.e.s.	not elsewhere specified																												
n.p.	not available for publication but included in totals where applicable																												
n.y.a.	not yet available																												
p	preliminary — figure or series subject to revision																												
SITC	Standard International Trade Classification																												
WHO	World Health Organisation																												
*	estimate has a relative standard error greater than 25% and is therefore subject to sampling variability too high for most practical uses																												
. .	not applicable																												
—	nil or rounded to zero (including null cells)																												
EXPLANATORY NOTES	<p>The statistics shown are the latest available as at 3 October 2001. Explanatory notes in the form found in other ABS publications are not included in State and Regional Indicators, Victoria. Readers are directed to the explanatory notes contained in related ABS publications.</p>																												
INQUIRIES	<p>For information about other ABS statistics and services, please refer to the back of this publication.</p>																												

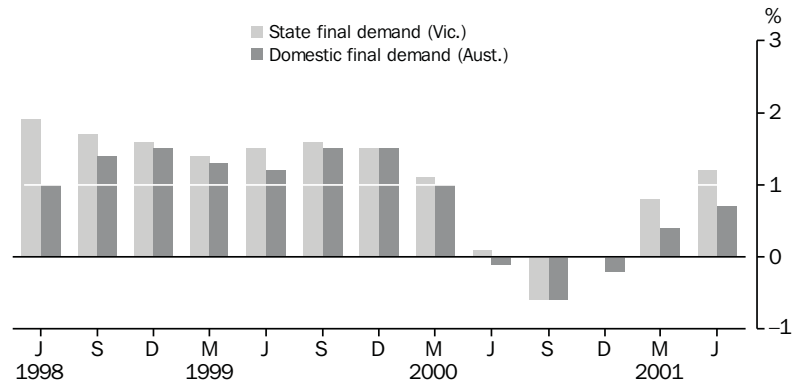
Zia Abbasi,
Regional Director, Victoria

OVERVIEW

STATE FINAL DEMAND

The trend series chain volume measure of State final demand for Victoria for June quarter 2001 was \$40,402m, an increase of 1.2% on the corresponding estimate for March quarter 2001. This compares to an increase of 0.7% in the corresponding measure for Australian domestic final demand for the same period. A quarterly growth rate of 1.2% in the Victorian indicator is the highest rate of growth since December quarter 1999.

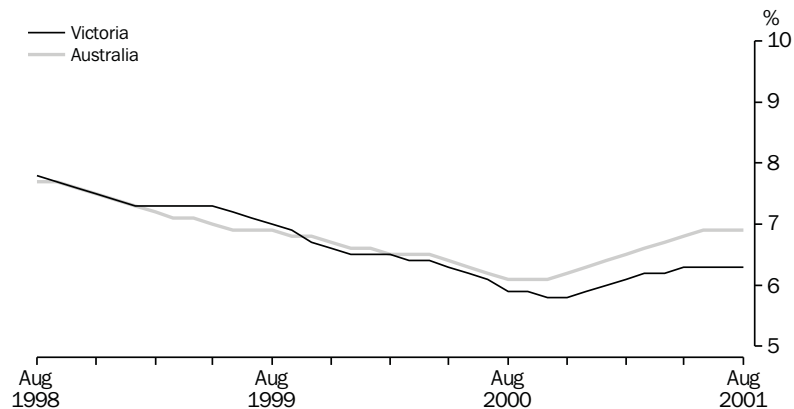
STATE FINAL DEMAND, CHAIN VOLUME MEASURES,
Trend estimate, Change from previous quarter



LABOUR MARKET

The August 2001 monthly trend estimate of Victoria's unemployment rate is 6.3%, the same value recorded for each month since May 2001. Victoria's trend estimate of unemployment rate has been lower than the corresponding Australian estimate since March 2000, and the rate of growth in this measure of unemployment rate in recent months has been lower than the rate of growth in the Australian estimate. The trend estimate of unemployment rate in Victoria has grown from the 5.8% recorded for October and November 2000 (the lowest levels since July 1990) to the August 2001 rate of 6.3%, compared to the Australian trend unemployment rate which has grown from 6.1% in August, September and October 2000 (the lowest levels since April 1990) to the August 2001 rate of 6.9%.

UNEMPLOYMENT RATE, Trend

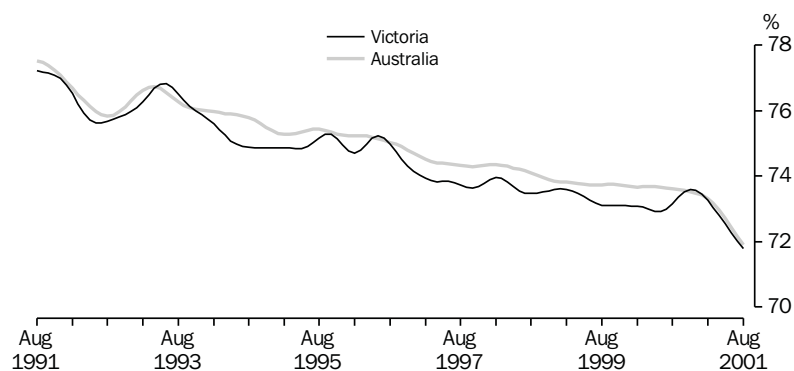


The Loddon-Mallee and All Gippsland Statistical Regions have recorded unemployment rates higher than any other Victorian Statistical Region in original terms for most months since December 2000. Since February 2001 the Barwon-Western and Goulburn-Ovens-Murray Statistical Regions have recorded monthly unemployment rates below or only slightly above the rate for the whole of Victoria. The recorded monthly unemployment rate for the Central Highlands-Wimmera Statistical Region has been similar to the rate recorded for the whole of Victoria between February 2001 and July 2001. This region records a large jump in the unemployment rate between July 2001 and August 2001, however a large portion of this apparent increase may be explained by variability caused by sampling methods, rather than being representative of the actual change in the unemployment rate of the region. Estimates of the unemployment rate at regional level are heavily influenced by sampling variability, due to the relatively small sample take within each region.

The trend estimate for number of persons employed in Victoria has grown by 1.4% between August 2000 and August 2001. The only State or Territory to record a greater rate of growth in the trend estimate over the same period is the Northern Territory (8.6%). The growth in the Australian trend estimate over the same period is 0.5%. The trend estimate of number of people employed in Victoria has been very stable since March 2001, with an increase of only 0.04% between May 2001 and August 2001. However, the trend estimate for number of people employed full-time has been falling since January 2001, with the trend estimate decreasing by -1.0% between May 2001 and August 2001.

An indication of relative numbers of persons employed full-time and persons employed part-time is given by the ratio of the trend estimate of number employed full-time to the trend estimate of total number employed. This ratio has shown a pattern of decline for many years now. In recent years, the rate of decline has been relatively small, with the Victorian ratio dropping from a rate of 73.7% in August 1997 to 73.1% in August 2000. Through the later half of 2000 the ratio increased to a peak of 73.6% in November 2000, and then began a relatively rapid decrease to the August 2001 value of 71.8%. The Australian-level ratio displays a similar pattern. It has decreased every month since May 2000, however the rate of decrease was modest throughout 2000, and has become much greater through 2001. The Australian ratio has values of 74.3% for August 1997, 73.6% for August 2000, and 71.9% for August 2001. The current rate of decrease in the Australian ratio is the greatest rate of decrease in the series since the fall throughout the first half of 1992.

FULL-TIME EMPLOYMENT AS A PROPORTION OF TOTAL EMPLOYMENT(a)



(a) Calculated using trend estimates of full-time and total employment.

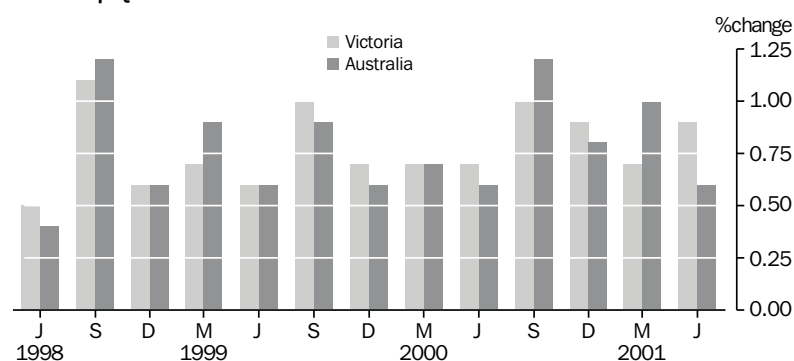
LABOUR MARKET *continued*

The estimate for Victoria's job vacancy rate for August 2001 is 1.39%, making it the third highest State or Territory estimated job vacancy rate in Australia, after Australian Capital Territory (2.09%) and Northern Territory (1.84%). The job vacancy rate for the whole of Australia is 1.24%. There were an estimated 28,700 job vacancies in Victoria in August 2001, or 31.0% of all job vacancies in Australia, an increase of 20.8% on the estimate of 23,800 vacancies for May 2001. Greater rates of increase in numbers of job vacancies between May 2001 and August 2001 were only recorded for Western Australia (50.8%) and Australian Capital Territory (26.1%). The rate of increase in job vacancies for Australia between May 2001 and August 2001 was 11.1%

The number of working days lost per 1,000 employees from industrial disputes causing stoppage of work has shown a pattern of decline since April 2000. The estimate of 57 working days lost per 1,000 employees for the 12 months ended April 2001 is the lowest estimate for a 12 month period since October 1992. The most recent estimate is 58 working days lost per 1,000 employees for the 12 months ended June 2001, and compares to an estimate of 121 working days lost per 1,000 employees for the 12 months ended June 2000.

The wage cost index for total hourly rates of pay excluding bonuses has recorded a growth of 0.9% for June quarter 2001, and an annual growth rate of 3.6% for the 12 months ended June 2001. The wage cost index of ordinary time hourly rates of pay excluding bonuses has also recorded a growth of 3.6% for the 12 months ended June 2001.

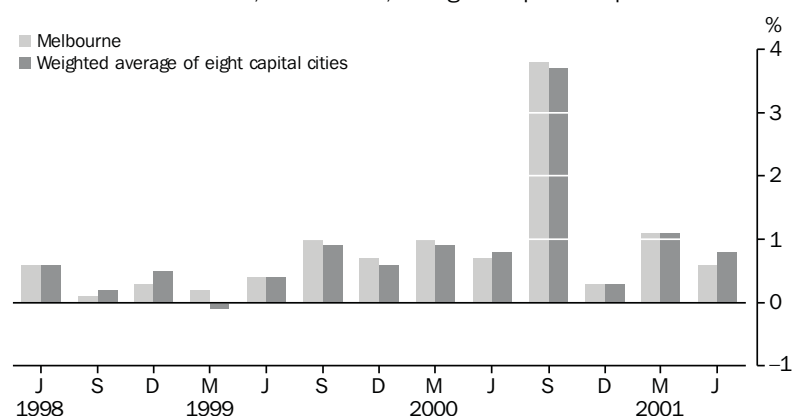
WAGE COST INDEX, VICTORIA,
Total hourly rates of pay excluding bonuses:
Base: Sep Qtr 1997 = 100.0



PRICE INDEXES

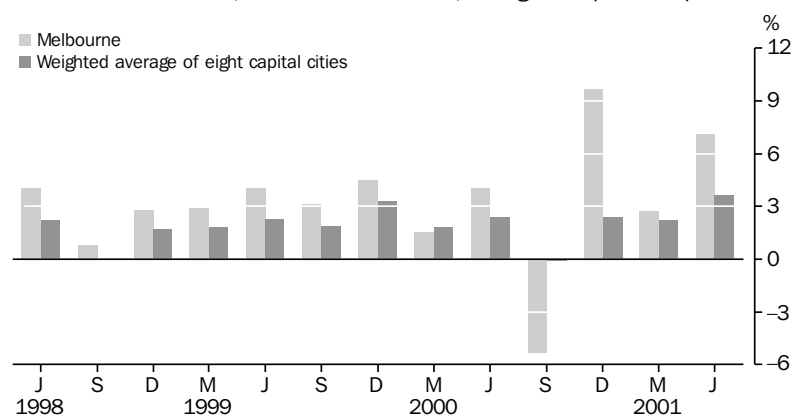
The consumer price index, all groups for Melbourne has recorded quarterly increases of 0.3% in December quarter 2000, 1.1% in March quarter 2001 and 0.6% in June quarter 2001. This follows the increase of 3.8% in September quarter 2001, following the introduction of the New Tax System. The annual growth rate between June quarter 2000 and June quarter 2001 is 5.9% for the Melbourne index, only marginally less than the rate of 6.0% recorded for the weighted average of eight capital cities index. The greatest quarterly rates of growth in Melbourne indexes for June quarter 2001 were recorded for transportation (1.8%), alcohol and tobacco (1.6%), food (1.5%) and household furnishings, supplies and services (1.4%). The greatest rates of reduction in Melbourne index values were recorded for recreation (-0.8%) and communication (-0.6%).

CONSUMER PRICE INDEX, ALL GROUPS, Change from previous quarter



The established house price index for Melbourne shows price increases for established homes well above the increases recorded for other capital cities. The increase in June quarter 2001 was 7.1%, compared to 3.6% for the weighted average of the eight capital cities. The increase between June quarter 2000 and June quarter 2001 was 14.3% for Melbourne and 8.2% for the weighted average of the eight capital cities.

HOUSE PRICE INDEXES, ESTABLISHED HOMES, Change from previous quarter



PRICE INDEXES *continued*

The Melbourne price indexes of materials used in building show a small quarterly increase for June quarter 2001, with the index of materials used in house building rising by 0.2% and the index of materials used in building other than house building rising by 0.6%.

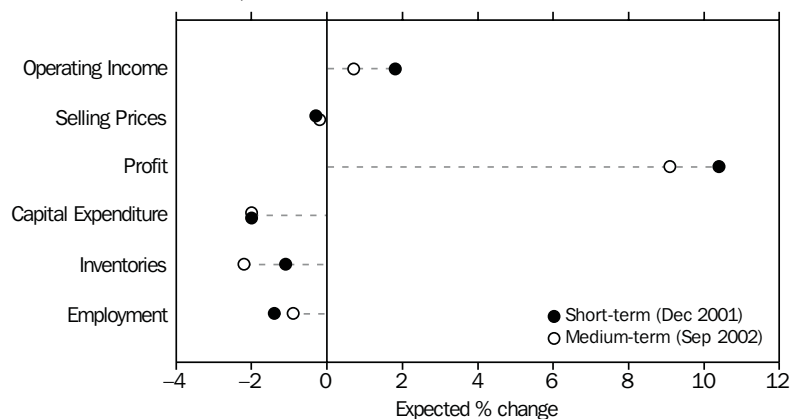
The Australian price index of materials used in manufacturing industries increased by 5.7% in June quarter 2001, the largest quarterly increase since December quarter 1990. The Australian price index of articles produced by manufacturing industries increased by 2.3% in the same period. The increase in the world price for crude oil during the June quarter was the main contributor to the increases in both indexes.

The Australian export price index increased by 4.3% in June quarter 2001. A large increase in the price of coal, due to the signing of new contracts during the June quarter primarily for the Japanese market, and higher world prices for beef, crude oil, wool and iron ore were the main contributors to the increase. The export price index for live animals and animal products increased by 7.6% in the quarter, and the index for textiles and textile products increased by 8.0%.

BUSINESS EXPECTATIONS

Victorian business expectations reported during September quarter 2001 were for decreases to be realised for selling prices, investment and employment, along with increases in operating income and profit. These same expectations applied in both the short-term (for December quarter 2001), and in the medium-term (for the 12 months ending September 2002). These expectations were similar to the expectations estimates reported for the whole of Australia, with the main difference being Australian expectations for increases in capital expenditure in both the short-term and medium-term, whereas Victorian expectations were for falls in the levels of capital expenditure in both the short-term and the medium-term. Compared to business in Australia as a whole, Victorian businesses are marginally more optimistic about profit outcomes (expected increases of 10.4% and 9.1% in the short and medium-term respectively, compared to expected increases of 8.9% and 7.9% respectively Australia-wide), and marginally more pessimistic about employment outcomes (expected decreases of -1.4% and -0.9% in the short and medium-term respectively, compared to expected decreases of -1.2% and -0.7% respectively Australia-wide).

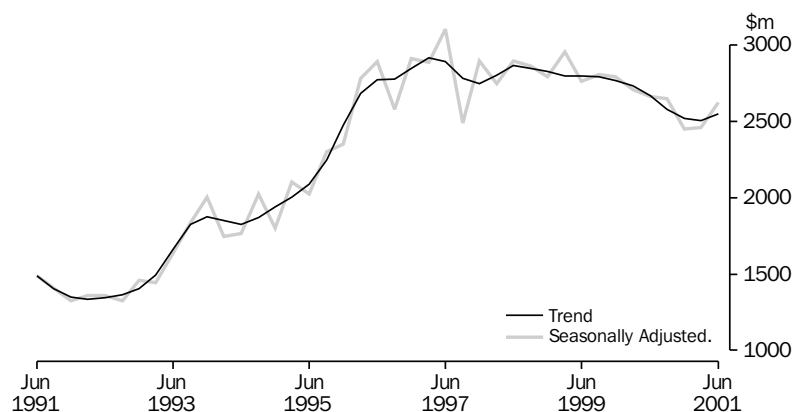
BUSINESS EXPECTATIONS, Victoria



FINANCE

The June quarter 2001 trend estimate of current price private new capital expenditure in Victoria was \$2,548m, an increase of 1.6% on the March quarter 2001 estimate, and a decrease of -4.6% on the June quarter 2000 estimate. The June quarter increase is the first quarterly increase in the trend series since June quarter 1999. Victoria's increase of 1.6% compares to decreases of -3.7% in NSW, -2.7% in Qld and -9.4% in SA, and increases of 7.2% in WA and 0.6% nationally.

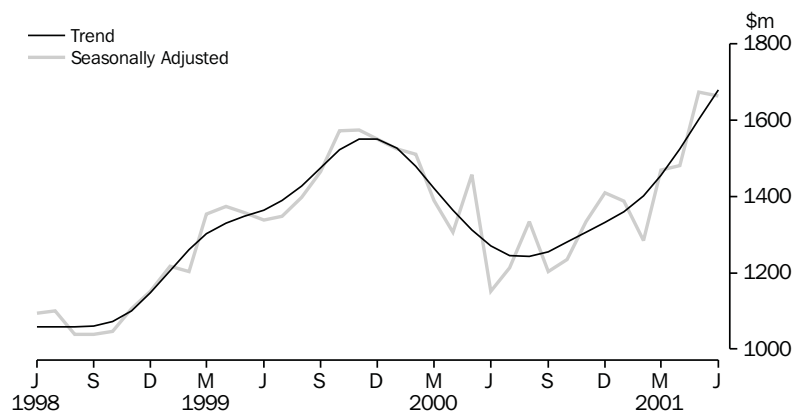
PRIVATE NEW CAPITAL EXPENDITURE, CURRENT PRICES, Victoria



The values of new personal finance commitments have been relatively high in the months of May, June and July 2001 for both the Victorian and Australian series. The estimate for Victoria for July 2001 is \$1,358.7m, compared to \$1,002.8m for April 2001. Most of the increase is related to new and increased credit limits, although the level of personal fixed loans is also relatively high.

The monthly trend estimate series for the value of Victorian new secured housing finance commitments has been increasing since September 2000. Since then, the monthly rate of growth reached a maximum of 5.1% in May 2001 and the most recent estimate is growth of 4.2% in July 2001. The trend estimate of the monthly value of new secured housing finance commitments is \$1,749m for July 2001, an increase of 40.5% on the monthly trend estimate of \$1,245m recorded for July 2000.

HOUSING FINANCE COMMITMENTS TO INDIVIDUALS, TOTAL VALUE, Victoria

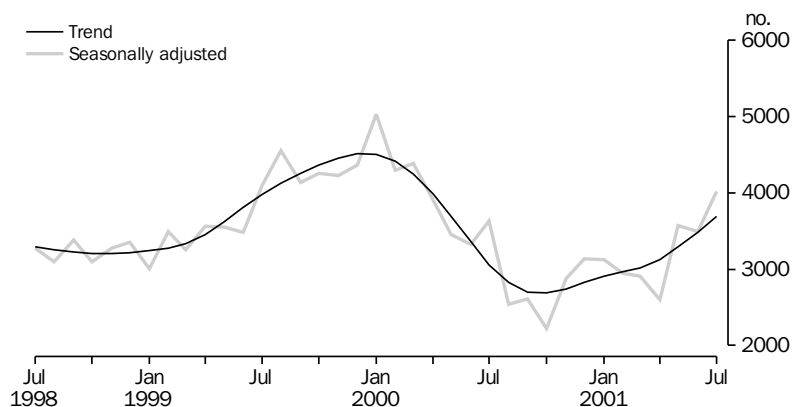


In original series terms, the monthly value of new housing finance commitments for first home buyers in Victoria in July 2001 was \$449.1m, an increase of 47.5% on the estimate of \$304.4m for July 2000. The July 2001 estimate for other home buyers was \$1,340.0m, an increase of 55.8% on the July 2000 estimate of \$860.2. In July 2001, 26.3% of all new housing finance commitments were for first-home buyers, an increase from the recent low of 20.3% recorded in March 2001, but still below the estimate of 27.9% recorded for July 2000.

CONSTRUCTION

The monthly trend estimate series of number of new dwelling units approved for Victoria shows an increase for every month since November 2000. The value of 2,686 approvals for the month of October 2000 is the lowest value for the trend estimate series since June 1997. Since then the trend estimate series has increased, with the monthly growth rate peaking at 9.6% in June 2001. The rate of growth has slowed marginally since then, with the value of 4,335 approvals for August 2001 representing a 8.2% increase on the estimate for July 2001. The August 2001 Victorian trend estimate for number of building approvals is 30.1% of the Australian trend estimate, and the August 2001 Victorian trend estimate for value of building approved is 33.3% of the Australian trend estimate.

DWELLING UNITS APPROVED, Victoria



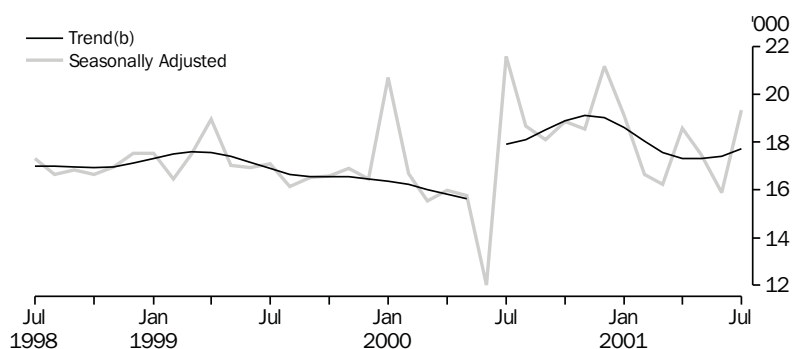
The local government areas with the highest ratio of dwelling unit approvals to resident population in the 12 months ended June 2001 are City of Melbourne (55.15 approvals per 1,000 population), Shire of Melton (28.64 approvals per 1,000 population), Bass Coast Shire (25.50 approvals per 1,000 population) and City of Port Phillip (25.44 approvals per 1,000 population). The local government areas with the lowest ratio of dwelling unit approvals to resident population in the year to June 2001 are Buloke Shire (0.41 approvals per 1,000 population) and Shire of Yarriambiack (0.48 approvals per 1,000 population). The ratio for the whole of the State of Victoria is 7.46 dwelling unit approvals per 1,000 population for the 12 months ended June 2001.

The chain volume measure of total value of building work commenced in the March quarter 2001 is \$2,134.1m, representing an increase of \$193.9m, or 10.0%, on the December quarter 2000 figure of \$1,940.2m.

NEW MOTOR VEHICLE REGISTRATIONS

The trend estimate series of new motor vehicle registrations shows an increase for June and July 2001 after 6 successive months of decrease from December 2000 to May 2001. The trend estimate of 17,712 new motor vehicle registrations for July 2001 represents an increase of 2.3% from the estimate of 17,373 recorded for April 2001. In the financial year 2000–01, 21.2% of all new motor vehicle registrations (in original series terms) were for owners resident outside of the Melbourne Major Statistical Region. These owners are mainly resident in non-metropolitan Victoria, but also include a small number of owners that are resident in another State. The 2000–01 estimate of 21.2% compared to an estimate of 22.9% for the 1999–2000 financial year.

NEW MOTOR VEHICLE REGISTRATIONS(a), Victoria



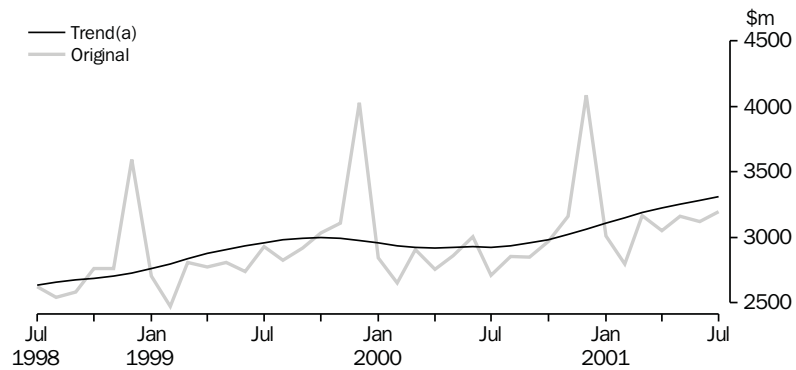
(a) Excludes Motorcycles.

(b) Break in series from July 2000, a result of the New Tax System.

RETAIL TURNOVER

The monthly trend estimate series for retail turnover in Victoria has been increasing since the break in the series at July 2000, although the rate of growth has been slowing since February 2001. The trend estimate for retail turnover in Victoria for August 2001 is \$3,316.1m, an increase of 2.0% on the estimate for May 2001. The trend estimate series for Australia increased by 1.8% over the same period. The increase in the trend estimate for Victoria between August 2000 and August 2001 is 12.9%, the largest rate of growth over this period of all the States and Territories. Since April 2001, the industry showing the greatest rate of growth in the trend estimate for Victoria has been household good retailing. The monthly trend estimate for household good retailing increased by 7.6% between May 2001 and August 2001 (compared to an increase of 4.2% in the corresponding estimate for Australia). Industries that are showing decreases in the trend estimate between May 2001 and August 2001 are food retailing (–0.3%, compared to 1.4% growth for Australia), department stores (–0.7%, compared to –0.4% for Australia) and clothing and soft good retailing (–2.1%, compared to –1.1% for Australia).

RETAIL TURNOVER, Victoria



(a) Break in series from July 2000, a result of the New Tax System.

TOURIST ACCOMMODATION

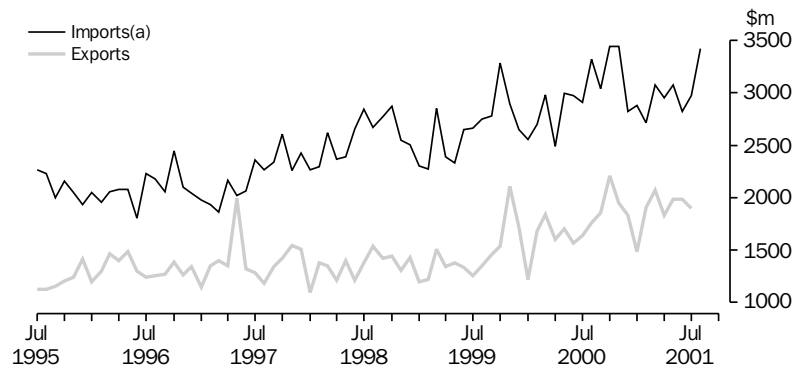
Estimated takings from tourist accommodation for June quarter 2001 were \$202.6m, an increase of 9.3% on the estimate of \$185.3m for June quarter 2000. The only States or Territories with a greater increase in takings from tourist accommodation over the same period are Queensland (10.9%) and Australian Capital Territory (23.2%). Persons employed in tourist accommodation establishments at the end of June 2001 is estimated at 22,008, an increase of 2.0% on the June 2000 estimate of 21,586.

INTERNATIONAL MERCHANDISE TRADE

The estimated value of Victorian imports in August 2001 was \$3,421m, an increase of 15.1% on the estimate for July 2001, and 3.1% on the estimate for August 2000. This compares to an estimated value of Australian imports in August 2001 of \$10,542m, an increase of 9.3% on the estimate for July 2001 and a decrease of -1.6% on the estimate for August 2000. The estimated value of Victorian exports in August 2001 was \$1,994m, an increase of 4.8% on the estimate for July 2001, and 13.1% on the estimate for August 2000. This compares to an estimated value of Australian exports in August 2001 of \$10,539m, a decrease of -0.5% on the estimate for July 2001 and an increase of 12.4% on the estimate for August 2000.

In August 2001 the value of Victorian imports was an estimated \$1,427m greater than the value of Victorian exports. For Australia as a whole, the value of imports was only \$3m greater than the value of exports.

INTERNATIONAL MERCHANDISE TRADE, Victoria



(a) Imports at Customs Value.

LIST OF TABLES

Page

SUMMARY

1	Summary of statistical indicators: State comparison	15
---	---	----

STATE FINAL DEMAND

2	State final demand: original	16
3	State final demand, chain volume measures: seasonally adjusted and trend	17

POPULATION

4	Estimated resident population and components of population change	18
5	Registration of births, deaths, marriages and divorces	18

LABOUR MARKET

6	Civilian labour force: all series	19
7	Civilian labour force, by region	20
8	Employed persons, by industry, August 2001	22
9	Part-time workers, by sex	22
10	Duration of unemployment, by sex and major statistical region	23
11	Job vacancies	24
12	Industrial disputes causing stoppage of work	25
13	Average weekly earnings of employees, by sex: all series	26
14	Wage costs indexes	27

PRICE INDEXES

15	Consumer price index, by group: Melbourne	27
16	House price indexes: Melbourne and weighted average of eight capital cities	28
17	Price indexes of materials used in building: Melbourne	28
18	Price indexes of materials used in manufacturing industries: Australia	29
19	Price indexes of articles produced by manufacturing industry: Australia	30
20	Export price indexes, by commodity: Australia	30

BUSINESS EXPECTATIONS

21	Business expectations, short-term outlook	31
22	Business expectations, medium-term outlook	31

FINANCE		
	23	Private new capital expenditure, by type of asset and industry: original 32
	24	Private new capital expenditure, by type of asset: seasonally adjusted and trend 32
	25	Bank deposits: all banks 33
	26	Commercial finance commitments 33
	27	Lease finance commitments, by purpose 34
	28	Personal finance commitments 34
	29	Secured housing finance commitments, dwelling units: all series 35
	30	Secured housing finance commitments, dwelling units, by type of borrower 36
CONSTRUCTION		
	31	Building approvals: all series 36
	32	Building approvals, by major statistical region 38
	33	Building approvals, by local government area 39
	34	Value of building work, chain volume measures 41
	35	Value of building activity other than houses, by local government area, March quarter 2001 42
MOTOR VEHICLE REGISTRATIONS		
	36	New motor vehicle registrations: all series 43
	37	New motor vehicle registrations, by Local Government Area 44
RETAIL		
	38	Retail turnover by industry: all series 45
	39	Retail turnover, chain volume measures: all series 47
TOURISM		
	40	Tourist accommodation 48
	41	Tourist accommodation, by tourism region, June quarter 2001 48
PRODUCTION		
	42	Livestock slaughterings and meat production: all series 49
	43	Other production 50
TRADE		
	44	International merchandise trade, by commodity 51
	45	Balance of international merchandise trade 51
	46	International merchandise trade, by major trading partners 52
NATURAL RESOURCES		
	47	Air quality 53
	48	Storage volumes in Victorian water storages, by river basin 54

1

SUMMARY OF STATISTICAL INDICATORS: STATE COMPARISON

	Period	% change from the same period in the previous year						
		Victoria as a proportion of Australia	Vic.	NSW	Qld	SA	WA	Aust.
State final demand (trend, chain volume measure)	Jun qtr 01	24.9	1.5	-2.5	2.9	1.1	2.7	0.3
Population								
Total population	Mar qtr 01	24.9	0.9	1.5	1.7	0.3	1.4	1.2
Natural increase(a)	Mar qtr 01	..	0.4	0.8	0.7	0.4	0.7	0.6
Net overseas migration(a)	Mar qtr 01	..	0.4	0.9	0.5	0.2	0.7	0.6
Net interstate migration(a)	Mar qtr 01	..	0.1	-0.3	0.5	-0.3	-0.1	..
Labour								
Number employed (trend)	Aug 01	25.2	1.4	0.0	-0.5	-2.9	0.6	0.5
Unemployment rate (trend)(b)	Aug 01	..	0.4	0.7	1.0	0.2	1.6	0.8
Participation rate (trend)(b)	Aug 01	..	0.0	0.3	0.0	-0.7	0.5	0.1
Working days lost for 12 months ended	Jun 01	33.3	-50.1	-62.0	-29.3	-81.3	-67.0	-56.1
Job vacancies	Aug 01	31.0	-26.1	-37.0	20.6	17.4	-9.4	-21.6
Average weekly FT adult total earnings (trend)	May 01	..	3.2	4.2	4.8	5.9	4.0	4.1
Wage cost index	Jun qtr 01	..	3.6	3.8	3.6	3.2	4.2	3.7
Prices								
Consumer price index	Jun qtr 01	..	5.9	6.3	6.0	5.9	6.0	6.0
Price index of materials used in building	Jun qtr 01	..	-0.9	-0.8	-2.2	-0.2	0.3	-0.9
Price index of materials used in building other than house building	Jun qtr 01	..	0.3	-0.5	-0.6	-0.2	0.3	-0.2
Established house price index	Jun qtr 01	..	14.3	6.3	5.3	7.6	5.6	8.2
Finance								
Capital expenditure (trend)	Jun qtr 01	26.1	-4.6	-17.0	-25.2	-12.1	26.8	-5.4
Bank deposits	Jul 01	23.4	2.9	8.8	10.8	9.9	7.9	7.6
Commercial finance	Jul 01	21.5	-0.1	-21.4	16.8	6.7	76.4	-5.9
Lease finance	Jul 01	24.0	55.6	44.8	51.6	193.1	25.5	47.8
Personal finance	Jul 01	26.4	28.0	26.7	22.4	25.5	41.2	27.5
Secured housing finance (trend)	Jul 01	21.9	40.5	50.0	60.9	28.6	31.7	45.2
Building								
Dwelling units approved (trend)	Aug 01	30.1	53.2	23.7	53.8	55.8	43.3	46.5
Value of residential building approved (trend)	Aug 01	34.4	61.7	42.8	62.5	51.1	43.4	51.2
Total value of building approved (trend)	Aug 01	33.3	41.8	26.6	33.3	50.8	24.9	33.2
Value of building commenced (chain volume measure)	Mar qtr 01	32.0	-17.5	-28.6	-16.7	-39.2	-36.4	-24.8
Value of building work done (seas. adj., chain volume measure)	Mar qtr 01	31.0	-8.6	-37.4	-20.8	-18.6	-23.7	-24.2
Consumer spending								
New motor vehicle registrations (trend)	Jul 01	28.1	-2.0	-5.8	-4.9	-5.2	-12.8	-5.5
Retail turnover (trend)	Aug 01	24.3	12.9	6.4	7.5	11.6	4.8	8.5
Takings from tourist accommodation	Jun qtr 01	18.2	9.3	3.8	10.9	5.8	2.5	6.9
International merchandise trade								
Imports	Aug 01	32.5	3.1	-6.2	1.2	25.5	-9.9	-1.6
Exports	Aug 01	18.9	13.1	1.3	27.1	17.9	8.0	12.4

(a) Percentage change figures for components of population increase indicate the contribution of each component to the total population increase.

(b) Percentage change columns indicate the difference between the percentage rate for the reference period, and the percentage rate for the same period in the previous year.

2

STATE FINAL DEMAND: ORIGINAL

	Sep qtr 1999	Dec qtr 1999	Mar qtr 2000	Jun qtr 2000	Sep qtr 2000	Dec qtr 2000	Mar qtr 2001	Jun qtr 2001
CURRENT PRICES (\$m)								
Final consumption expenditure								
General government	6 205	6 507	6 696	7 103	7 154	7 051	7 005	7 327
Households	23 328	24 973	22 638	23 809	24 660	26 156	24 416	25 973
Gross fixed capital formation								
Private								
Dwellings	2 102	2 261	2 346	2 944	2 551	2 402	2 254	2 556
Other buildings and structures	1 250	1 354	1 146	1 304	1 191	1 227	1 195	1 341
Machinery and equipment	2 774	3 065	2 467	2 824	3 045	2 737	2 486	2 802
Livestock	120	120	120	120	162	162	162	162
Intangible fixed assets	659	700	683	699	717	777	764	787
Ownership transfer costs	489	497	578	549	532	504	521	572
<i>Total private</i>	7 394	7 997	7 338	8 440	8 198	7 810	7 381	8 221
Public	1 297	1 354	1 318	1 336	1 032	1 215	1 098	1 542
State final demand	38 224	40 831	37 991	40 688	41 044	42 233	39 900	43 064
International trade—exports of goods	4 303	5 724	4 980	5 271	5 557	6 341	5 762	6 107
International trade—imports of goods	8 187	8 827	8 238	8 465	9 268	9 704	8 668	8 846
Compensation of employees	18 802	19 764	19 586	20 016	20 291	21 597	20 939	21 022
CHAIN VOLUME MEASURES(a) (\$m)								
Final consumption expenditure								
General government	6 400	6 563	6 667	6 881	6 837	6 820	6 777	6 932
Households	23 503	25 102	22 541	23 602	23 789	25 157	23 273	24 592
Gross fixed capital formation								
Private								
Dwellings	2 177	2 301	2 327	2 849	2 244	2 115	1 967	2 223
Other buildings and structures	1 271	1 359	1 141	1 283	1 166	1 187	1 142	1 273
Machinery and equipment	2 738	3 065	2 492	2 835	3 153	2 785	2 506	2 803
Livestock	120	120	120	120	118	118	118	118
Intangible fixed assets	644	694	688	715	743	817	815	848
Ownership transfer costs	475	474	604	560	541	498	476	519
<i>Total private</i>	7 434	8 030	7 361	8 343	7 966	7 519	7 024	7 783
Public	1 285	1 351	1 331	1 338	1 041	1 223	1 098	1 541
State final demand	38 597	41 054	37 901	40 181	39 633	40 719	38 172	40 848
International trade—exports of goods	4 476	5 811	4 987	5 005	5 147	5 537	5 011	5 154
International trade—imports of goods	8 510	8 937	8 256	8 014	8 749	8 619	7 803	7 718

(a) Reference year for chain volume measures is 1999–2000.

Source: Australian National Accounts (Cat. no. 5206.0); ABS data available on request, Australian National Accounts.

3

STATE FINAL DEMAND, CHAIN VOLUME MEASURES(a): SEASONALLY ADJUSTED AND TREND

	Sep qtr 1999	Dec qtr 1999	Mar qtr 2000	Jun qtr 2000	Sep qtr 2000	Dec qtr 2000	Mar qtr 2001	Jun qtr 2001
SEASONALLY ADJUSTED (\$m)								
Final consumption expenditure								
General government	6 382	6 510	6 747	6 872	6 907	6 743	6 816	6 901
Households	23 511	23 812	23 596	23 829	23 725	23 885	24 474	24 728
Gross fixed capital formation								
Private								
Dwellings	2 179	2 201	2 487	2 787	2 241	2 031	2 106	2 171
Other buildings and structures	1 268	1 296	1 219	1 271	1 157	1 126	1 218	1 244
Machinery and equipment	2 649	2 888	2 902	2 691	3 023	2 647	2 918	2 658
Livestock	120	120	120	120	118	118	118	118
Intangible fixed assets	649	674	699	719	749	792	827	853
Ownership transfer costs	450	477	615	570	520	499	488	527
Total private	7 317	7 671	8 046	8 135	7 807	7 212	7 676	7 571
Public	1 392	1 410	1 384	1 119	1 161	1 285	1 125	1 332
State final demand	38 594	39 397	39 776	39 967	39 600	39 124	40 091	40 532
International trade—exports of goods	4 607	5 458	5 109	5 106	5 282	5 186	5 127	5 255
International trade—imports of goods	8 194	8 651	8 500	8 372	8 432	8 343	8 069	8 045
TREND ESTIMATES(b) (\$m)								
Final consumption expenditure								
General government	6 408	6 537	6 726	6 849	6 857	6 822	6 822	6 851
Households	23 485	23 682	23 743	23 713	23 775	24 021	24 355	24 729
Gross fixed capital formation								
Private								
Dwellings	2 123	2 313	2 512	2 535	2 353	2 146	2 079	2 121
Other buildings and structures	1 264	1 264	1 259	1 217	1 177	1 167	1 191	1 227
Machinery and equipment	2 751	2 815	2 862	2 812	2 867	2 814	2 776	2 729
Livestock	118	120	120	119	118	118	118	118
Intangible fixed assets	639	674	699	721	753	789	824	857
Ownership transfer costs	479	517	559	571	534	502	500	509
Total private	7 358	7 669	8 085	7 995	7 716	7 530	7 532	7 525
Public	1 448	1 411	1 300	1 219	1 171	1 192	1 233	1 268
State final demand	38 740	39 336	39 770	39 793	39 564	39 578	39 906	40 402
International trade—exports of goods	4 860	5 102	5 218	5 212	5 174	5 198	5 191	5 193
International trade—imports of goods	8 275	8 480	8 527	8 470	8 381	8 285	8 152	8 011
TREND ESTIMATES (% CHANGE FROM PREVIOUS QUARTER)								
Final consumption expenditure								
General government	0.6	2.0	2.9	1.8	0.1	-0.5	—	0.4
Households	1.4	0.8	0.3	-0.1	0.3	1.0	1.4	1.5
Gross fixed capital formation								
Private								
Dwellings	3.4	9.0	8.6	0.9	-7.2	-8.8	-3.2	2.1
Other buildings and structures	-4.4	—	-0.3	-3.4	-3.3	-0.8	2.0	3.0
Machinery and equipment	3.1	2.3	1.7	-1.7	2.0	-1.8	-1.4	-1.7
Livestock	2.6	1.9	0.3	-0.8	-0.7	-0.4	-0.1	0.1
Intangible fixed assets	7.2	5.5	3.7	3.2	4.4	4.8	4.5	4.0
Ownership transfer costs	2.0	7.8	8.2	2.2	-6.4	-6.1	-0.3	1.8
Total private	0.8	4.2	5.4	-1.1	-3.5	-2.4	—	-0.1
Public	7.1	-2.6	-7.9	-6.2	-4.0	1.8	3.4	2.8
State final demand	1.6	1.5	1.1	0.1	-0.6	—	0.8	1.2
International trade—exports of goods	6.8	5.0	2.3	-0.1	-0.7	0.5	-0.1	—
International trade—imports of goods	4.0	2.5	0.5	-0.7	-1.1	-1.1	-1.6	-1.7

(a) Reference year for chain volume measures is 1999–2000.

(b) Trend estimates for aggregates are derived directly, rather than as the sum of components. As a result, the sum of the trend estimates of individual components of a particular aggregate will not sum to the overall trend estimate of the aggregate.

Source: Australian National Accounts (Cat. no. 5206.0); ABS data available on request, Australian National Accounts.

4

ESTIMATED RESIDENT POPULATION AND COMPONENTS OF POPULATION CHANGE

Period	Population at end of period			Components of population change				% change from previous 12 months	
	Males '000	Females '000	Persons '000	Natural increase '000	Net overseas migration '000	Net interstate migration '000	Total increase(a) '000	Victoria	Australia
1994–1995	2 233.4	2 284.0	4 517.4	31.3	19.3	-22.0	29.8	0.66	1.22
1995–1996	2 252.6	2 307.5	4 560.2	28.5	25.7	-12.8	42.8	0.95	1.32
1996–1997	2 275.2	2 330.0	4 605.2	28.7	21.1	-4.7	45.1	0.99	1.17
1997–1998	2 301.0	2 353.9	4 654.9	27.7	20.8	1.2	49.7	1.08	1.11
1998–1999	2 328.1	2 379.5	4 707.6	27.1	21.6	4.0	52.7	1.13	1.10
1999–2000	2 359.0	2 407.8	4 766.8	27.7	24.8	6.7	59.2	1.26	1.16
1999									
June	2 328.1	2 379.5	4 707.6	6.4	2.9	1.1	10.4	1.13	1.10
September	2 336.3	2 386.7	4 723.0	7.0	p 7.4	1.0	15.4	1.16	1.09
December	2 343.7	2 394.5	4 738.2	7.0	p 5.9	2.3	15.2	1.15	1.12
2000									
March	2 352.8	2 402.4	4 755.2	7.3	p 7.9	1.9	17.0	1.24	1.16
June	2 359.0	2 407.8	4 766.8	6.4	p 3.7	1.5	11.6	1.26	1.16
September p	2 368.2	2 415.6	4 783.8	6.2	(b) 9.0	1.8	17.0	1.29	1.18
December p	2 375.6	2 422.7	4 798.3	6.2	(b) 6.4	1.9	14.5	1.27	1.18
2001									
March p	2 385.5	2 430.6	4 816.1	6.7	(c) 8.4	2.7	17.8	1.28	1.18

(a) Differences between total growth and the sum of natural increase and net migration arise from retrospective adjustments (which are made after each Census) to compensate for any intercensal discrepancy.

(b) Special arrangements were put in place to obtain overseas migration data for September and December quarters 2000. Further information is available in December quarter 2000, *Australian Demographic Statistics* (Cat. no. 3101.0) and *Demography Working Paper 2001/1 — Estimating July to December 2000 Net Overseas Migration*, available on the ABS website <www.abs.gov.au>. From the navigation bar select Themes; Demography; ABS Demography Working Papers.

(c) The resident population as at 31 March 2001 is a projection, because the ABS has yet to receive the data necessary to estimate net overseas migration.

Source: *Australian Demographic Statistics* (Cat. no. 3101.0); ABS data available on request, *Australian Demographic Statistics*.

5

REGISTRATION OF BIRTHS, DEATHS, MARRIAGES AND DIVORCES

Period	Births	Infant deaths(a)	Total deaths	Marriages	Divorces
REGISTRATIONS (no.)					
1997–1998	60 143	292	32 423	25 955	11 916
1998–1999	59 374	318	32 298	26 351	12 579
1999–2000	59 733	304	31 992	27 558	12 818
1999					
March	14 939	85	7 259	8 657	2 738
June	14 590	88	8 205	5 922	3 105
September	15 655	79	8 636	4 211	3 461
December	14 909	75	7 912	8 462	3 438
2000					
March	14 626	73	7 350	8 683	2 733
June	14 543	77	8 094	6 202	3 186
September	p 14 633	p 63	p 8 403	3 943	3 088
December	p 15 520	p 68	p 9 356	8 024	3 394
2001					
March p	13 609	51	6 870	8 049	2 590
RATE PER 1,000 MEAN ESTIMATED RESIDENT POPULATION					
1997–1998	13.00	4.86	7.01	5.61	2.58
1998–1999	12.68	5.36	6.90	5.63	2.69
1999–2000	12.61	5.09	6.75	5.82	2.71

(a) Rate for infant deaths is per 1,000 live births, and not per 1,000 mean population. Infant deaths are understated due to incomplete identification of age at death data. Rates will be revised when calendar year numbers are finalised.

Source: *Australian Demographic Statistics* (Cat. no. 3101.0).

6

CIVILIAN LABOUR FORCE(a): ALL SERIES

Month	Employed		Unemployed '000	Labour force '000	Unemployment rate		Participation rate	
	Full-time '000	Total '000			Victoria %	Australia %	Victoria %	Australia %
ORIGINAL								
2000								
August	1 643.7	2 272.7	140.0	2 412.7	5.8	6.0	63.1	63.3
September	1 685.5	2 313.9	151.2	2 465.2	6.1	6.1	64.4	64.3
October	1 696.7	2 307.6	136.3	2 443.9	5.6	5.7	63.8	63.5
November	1 691.6	2 298.4	133.6	2 432.1	5.5	6.0	63.4	63.2
December	1 728.9	2 332.9	143.7	2 476.7	5.8	6.3	64.4	64.4
2001								
January	1 690.7	2 277.1	148.9	2 426.0	6.1	6.7	63.0	62.8
February	1 707.1	2 315.6	166.1	2 481.7	6.7	7.4	64.4	63.8
March	1 682.6	2 305.7	161.7	2 467.5	6.6	6.9	63.9	63.6
April	1 685.6	2 310.7	155.9	2 466.6	6.3	6.8	63.8	63.9
May	1 677.8	2 313.0	157.4	2 470.4	6.4	6.9	63.9	63.7
June	1 659.4	2 322.1	146.4	2 468.5	5.9	6.7	63.7	63.7
July	1 665.5	2 320.9	147.5	2 468.4	6.0	6.3	63.7	63.6
August	1 648.5	2 303.1	152.0	2 455.1	6.2	6.6	63.2	63.3
SEASONALLY ADJUSTED								
2000								
August	1 664.9	2 292.1	144.1	2 436.2	5.9	6.1	63.7	64.0
September	1 681.0	2 293.6	144.4	2 438.0	5.9	6.0	63.7	63.7
October	1 695.6	2 302.5	144.1	2 446.6	5.9	6.0	63.8	63.6
November	1 705.1	2 301.2	142.3	2 443.6	5.8	6.3	63.7	63.4
December	1 698.6	2 300.6	143.7	2 444.3	5.9	6.3	63.6	63.5
2001								
January	1 694.7	2 317.4	144.7	2 462.0	5.9	6.3	64.0	63.6
February	1 689.0	2 324.5	149.9	2 474.4	6.1	6.6	64.2	63.6
March	1 688.8	2 310.0	151.8	2 461.9	6.2	6.5	63.8	63.5
April	1 694.6	2 310.5	155.7	2 466.2	6.3	6.8	63.8	63.9
May	1 684.1	2 316.1	158.2	2 474.3	6.4	6.9	64.0	63.9
June	1 669.9	2 316.3	152.9	2 469.3	6.2	6.9	63.8	63.8
July	1 649.2	2 305.9	157.0	2 462.9	6.4	6.9	63.5	63.6
August	1 669.6	2 323.0	156.3	2 479.3	6.3	6.8	63.9	64.0
TREND ESTIMATES								
2000								
August	1 675.5	2 290.5	144.6	2 435.2	5.9	6.1	63.7	63.8
September	1 684.8	2 296.7	143.1	2 439.8	5.9	6.1	63.8	63.7
October	1 691.8	2 301.2	142.6	2 443.8	5.8	6.1	63.8	63.6
November	1 696.0	2 304.8	143.1	2 447.9	5.8	6.2	63.8	63.5
December	1 697.9	2 308.3	144.5	2 452.8	5.9	6.3	63.8	63.5
2001								
January	1 697.8	2 311.8	146.6	2 458.4	6.0	6.4	63.9	63.5
February	1 695.3	2 314.2	149.1	2 463.4	6.1	6.5	63.9	63.6
March	1 690.6	2 315.0	151.8	2 466.7	6.2	6.6	63.9	63.7
April	1 685.0	2 314.6	153.9	2 468.5	6.2	6.7	63.9	63.7
May	1 678.8	2 314.1	155.3	2 469.4	6.3	6.8	63.8	63.8
June	1 672.4	2 314.0	156.1	2 470.1	6.3	6.9	63.8	63.8
July	1 666.5	2 314.3	156.7	2 470.9	6.3	6.9	63.7	63.8
August	1 661.6	2 315.0	156.8	2 471.8	6.3	6.9	63.7	63.9

(a) Civilian population aged 15 years and over. From April 2001 the Labour Force Survey was conducted using a redesigned questionnaire containing additional data items and some minor definitional changes. Although the impact on core labour force series has been minor, revisions have been made to estimates previously published to ensure continuity. The revised series were released on 3 May 2001. Information Paper: *Implementing the Redesigned Labour Force Survey Questionnaire* (Cat. no. 6295.0) contains further information about the questionnaire changes and the revised series. For details on the content of the redesigned questionnaire, see Information Paper: *Questionnaires Used in the Labour Force Survey* (Cat. no. 6232.0).

Source: *Labour Force, Australia* (Cat. no. 6202.0); *Labour Force, Victoria* (Cat. no. 6202.2).

7

CIVILIAN LABOUR FORCE(a), BY REGION

Month	Employed			Unemployed '000	Labour force '000	Unemployment rate %	Participation rate %
	Full-time '000	Part-time '000	Total '000				
MELBOURNE MAJOR STATISTICAL REGION							
2000							
June	1 255.4	463.8	1 719.2	107.3	1 826.5	5.9	64.5
July	1 267.2	457.4	1 724.5	108.2	1 832.7	5.9	64.6
August	1 256.2	456.6	1 712.8	108.1	1 820.8	5.9	64.1
September	1 267.5	447.4	1 714.9	113.3	1 828.2	6.2	65.3
October	1 274.4	436.2	1 710.6	101.8	1 812.4	5.6	64.7
November	1 266.4	436.1	1 702.5	99.6	1 802.0	5.5	64.2
December	1 293.8	428.5	1 722.3	103.2	1 825.6	5.7	65.0
2001							
January	1 262.3	409.9	1 672.2	110.1	1 782.3	6.2	63.3
February	1 279.2	432.3	1 711.5	122.2	1 833.7	6.7	65.1
March	1 266.5	433.8	1 700.2	125.7	1 825.9	6.9	64.7
April	1 272.6	441.7	1 714.4	115.2	1 829.5	6.3	64.8
May	1 269.6	448.8	1 718.4	115.2	1 833.6	6.3	64.8
June	1 255.4	463.8	1 719.2	107.3	1 826.5	5.9	64.5
July	1 267.2	457.4	1 724.5	108.2	1 832.7	5.9	64.6
August	1 256.2	456.6	1 712.8	108.1	1 820.8	5.9	64.1
BARWON-WESTERN DISTRICT STATISTICAL REGION							
2000							
June	113.0	57.8	170.8	7.7	178.5	4.3	63.1
July	115.8	56.0	171.8	8.6	180.3	4.8	62.9
August	111.9	55.0	166.9	8.8	175.8	5.0	60.3
September	109.7	44.0	153.7	15.4	169.1	9.1	59.2
October	110.2	47.5	157.7	12.7	170.5	7.5	60.4
November	114.0	47.8	161.8	10.7	172.5	6.2	60.4
December	119.4	52.7	172.1	10.0	182.1	5.5	62.1
2001							
January	118.3	41.9	160.3	8.8	169.1	5.2	59.2
February	123.4	47.7	171.1	12.8	183.9	6.9	62.7
March	120.1	42.8	162.9	11.4	174.3	6.5	62.0
April	125.8	48.7	174.5	11.0	185.5	5.9	62.8
May	116.5	51.6	168.1	9.0	177.1	5.1	61.9
June	113.0	57.8	170.8	7.7	178.5	4.3	63.1
July	115.8	56.0	171.8	8.6	180.3	4.8	62.9
August	111.9	55.0	166.9	8.8	175.8	5.0	60.3
CENTRAL HIGHLANDS-WIMMERA STATISTICAL REGION							
2000							
June	59.5	33.9	93.4	6.9	100.3	6.9	61.0
July	54.8	36.6	91.4	6.0	97.4	6.1	58.5
August	52.1	35.6	87.7	8.7	96.4	9.0	59.7
September	70.1	25.8	95.9	6.5	102.4	6.4	61.8
October	72.3	27.4	99.8	6.8	106.6	6.4	62.0
November	73.5	27.1	100.6	7.1	107.7	6.6	62.5
December	73.8	22.0	95.8	8.3	104.1	8.0	64.2
2001							
January	67.2	26.3	93.5	9.4	103.0	9.2	63.5
February	68.9	29.1	98.1	6.7	104.8	6.4	64.9
March	66.3	33.3	99.6	7.1	106.7	6.7	64.1
April	60.3	33.1	93.5	4.8	98.2	4.8	61.6
May	58.2	32.4	90.6	5.4	96.1	5.7	60.8
June	59.5	33.9	93.4	6.9	100.3	6.9	61.0
July	54.8	36.6	91.4	6.0	97.4	6.1	58.5
August	52.1	35.6	87.7	8.7	96.4	9.0	59.7

For footnotes see end of table.

...continued

Month	Employed			Unemployed '000	Labour force '000	Unemployment rate %	Participation rate %
	Full-time '000	Part-time '000	Total '000				
LODDON-MALLEE STATISTICAL REGION							
2000							
June	74.4	35.9	110.4	9.9	120.2	8.2	61.5
July	72.0	34.8	106.8	10.0	116.8	8.6	61.6
August	77.7	33.1	110.8	11.0	121.9	9.1	63.2
September	68.7	34.7	103.4	9.4	112.8	8.3	61.9
October	72.9	31.2	104.1	5.8	109.8	5.2	60.3
November	72.0	30.1	102.1	6.3	108.5	5.8	58.9
December	81.0	34.5	115.5	9.4	124.9	7.5	63.0
2001							
January	75.3	38.7	114.0	12.4	126.4	9.8	63.4
February	78.2	35.7	113.9	9.8	123.7	7.9	62.6
March	75.9	37.8	113.7	9.3	123.0	7.5	62.0
April	77.5	36.0	113.5	9.8	123.3	8.0	62.9
May	73.7	35.2	108.9	10.0	118.9	8.4	61.1
June	74.4	35.9	110.4	9.9	120.2	8.2	61.5
July	72.0	34.8	106.8	10.0	116.8	8.6	61.6
August	77.7	33.1	110.8	11.0	121.9	9.1	63.2
GOULBURN-OVENS-MURRAY STATISTICAL REGION							
2000							
June	95.6	40.8	136.4	6.3	142.7	4.4	64.3
July	94.3	44.1	138.4	7.0	145.4	4.8	63.6
August	90.0	46.0	135.9	7.7	143.7	5.4	62.9
September	102.8	37.8	140.6	9.5	150.1	6.3	66.0
October	98.2	34.7	132.9	10.0	143.0	7.0	62.8
November	96.0	35.1	131.1	9.9	140.9	7.0	63.1
December	100.2	36.5	136.7	9.6	146.3	6.6	66.4
2001							
January	98.7	38.6	137.4	11.6	149.0	7.8	67.5
February	94.5	36.1	130.6	7.5	138.1	5.4	65.1
March	89.7	40.1	129.8	9.5	139.3	6.8	64.1
April	86.9	36.8	123.7	7.5	131.2	5.7	62.3
May	92.6	37.8	130.4	9.2	139.6	6.6	62.8
June	95.6	40.8	136.4	6.3	142.7	4.4	64.3
July	94.3	44.1	138.4	7.0	145.4	4.8	63.6
August	90.0	46.0	135.9	7.7	143.7	5.4	62.9
ALL GIPPSLAND STATISTICAL REGION							
2000							
June	61.5	30.4	91.9	8.3	100.3	8.3	57.1
July	61.5	26.5	88.0	7.9	95.9	8.2	56.9
August	60.6	28.4	88.9	7.7	96.6	7.9	58.5
September	65.1	30.6	95.7	7.7	103.4	7.4	61.5
October	66.3	28.4	94.7	7.2	101.9	7.1	61.3
November	68.7	26.3	95.0	7.6	102.6	7.4	61.6
December	60.2	26.1	86.3	7.7	94.0	8.2	59.0
2001							
January	65.1	23.2	88.3	8.6	96.9	8.9	58.1
February	62.0	24.1	86.1	12.6	98.7	12.8	57.5
March	62.9	26.0	88.8	10.1	98.9	10.2	56.9
April	62.5	28.7	91.1	7.7	98.8	7.8	55.9
May	67.3	29.3	96.6	8.6	105.2	8.1	59.1
June	61.5	30.4	91.9	8.3	100.3	8.3	57.1
July	61.5	26.5	88.0	7.9	95.9	8.2	56.9
August	60.6	28.4	88.9	7.7	96.6	7.9	58.5

(a) Civilian population aged 15 years and over. From April 2001 the Labour Force Survey was conducted using a redesigned questionnaire containing additional data items and some minor definitional changes. Although the impact on core labour force series has been minor, revisions have been made to estimates previously published to ensure continuity. The revised series were released on 3 May 2001. Information Paper: *Implementing the Redesigned Labour Force Survey Questionnaire* (Cat. no. 6295.0) contains further information about the questionnaire changes and the revised series. For details on the content of the redesigned questionnaire, see Information Paper: *Questionnaires Used in the Labour Force Survey* (Cat. no. 6232.0).

Source: *Labour Force, Victoria* (Cat. no. 6202.2).

8

EMPLOYED PERSONS, BY INDUSTRY(a), AUGUST 2001

<i>Industry division</i>	<i>Males</i>	<i>Females</i>	<i>Persons</i>
	'000	'000	'000
Agriculture, forestry and fishing	57.4	33.9	91.3
Mining	*3.2	*0.6	*3.8
Manufacturing	257.3	103.8	361.1
Electricity, gas and water supply	15.3	5.2	20.5
Construction	140.5	17.6	158.1
Wholesale trade	69.7	33.5	103.2
Retail trade	183.3	176.8	360.1
Accommodation, cafes and restaurants	40.8	50.1	91.0
Transport and storage	80.3	23.6	103.9
Communication services	35.6	13.6	49.2
Finance and insurance	44.0	49.9	94.0
Property and business services	141.3	114.5	255.8
Government administration and defence	38.2	42.4	80.6
Education	58.2	107.5	165.7
Health and community services	46.8	174.4	221.2
Cultural and recreational services	30.1	28.4	58.5
Personal and other services	43.7	41.4	85.1
Total	1285.8	1 017.3	2 303.1

(a) From April 2001 the Labour Force Survey was conducted using a redesigned questionnaire containing additional items and some minor definitional changes. Revisions have been made to core labour force estimates to ensure continuity. However, counts of employed persons by industry, being non-core data items, have not been revised. Thus data from April 2001 onwards are not strictly comparable with earlier unrevised data. Further information is contained in footnotes to tables 6 and 7.

Source: ABS data available on request, Labour Force.

9

PART-TIME WORKERS(a), BY SEX

<i>Month</i>	<i>Preferred to work more hours</i>					<i>Total part-time workers</i>	<i>Proportion of part-time workers preferring to work more hours</i>
	<i>Preferred not to work more hours</i>	<i>Had actively looked for more hours and were available to work more hours</i>	<i>Wanted to work full-time</i>	<i>All part-time workers who preferred to work more hours</i>			
	'000	'000	'000	'000	'000	%	
MALES							
2001							
May	127.4	23.8	18.6	58.4	185.8	31.4	
August	126.0	24.4	19.6	64.2	190.2	33.8	
FEMALES							
2001							
May	356.2	33.3	19.8	93.2	449.4	20.7	
August	365.1	33.8	20.4	99.3	464.4	21.4	
PERSONS							
2001							
May	483.6	57.1	38.4	151.6	635.2	23.9	
August	491.2	58.2	40.0	163.5	654.7	25.0	

(a) Civilian population aged 15 years and over. From April 2001 the Labour Force Survey was conducted using a redesigned questionnaire containing additional data items and some minor definitional changes. For details on the content of the redesigned questionnaire, see Information Paper: *Questionnaires Used in the Labour Force Survey* (Cat. no. 6232.0). Additional quarters of data will be available in future issues.

Source: ABS data available on request, Labour Force.

	<i>Number of persons unemployed for</i>			<i>Total unemployed persons</i>
	<i>Under 13 weeks</i>	<i>13 and under 52 weeks</i>	<i>52 weeks and over</i>	
	'000	'000	'000	
MELBOURNE MAJOR STATISTICAL REGION				
MALES				
2001				
April	31.4	20.9	13.2	65.5
May	25.6	22.2	11.7	59.6
June	24.3	18.1	15.7	58.1
July	28.9	19.3	12.4	60.6
August	30.8	19.8	12.7	63.2
FEMALES				
2001				
April	26.9	14.2	8.6	49.7
May	25.6	19.1	10.9	55.6
June	22.8	17.4	9.1	49.2
July	24.6	15.7	7.4	47.6
August	22.9	14.8	7.1	44.8
PERSONS				
2001				
April	58.3	35.1	21.8	115.2
May	51.3	41.3	22.6	115.2
June	47.1	35.4	24.8	107.3
July	53.5	35.0	19.7	108.2
August	53.7	34.5	19.8	108.1
BALANCE OF VICTORIA MAJOR STATISTICAL REGION				
MALES				
2001				
April	8.5	5.1	9.6	23.3
May	9.8	6.6	6.8	23.2
June	8.7	7.0	6.2	21.9
July	8.0	8.2	5.8	22.0
August	9.9	9.6	6.3	25.8
FEMALES				
2001				
April	8.1	5.1	*4.3	17.5
May	6.9	6.7	5.3	19.0
June	6.4	5.2	5.6	17.2
July	4.4	7.3	5.7	17.3
August	5.6	7.4	5.1	18.2
PERSONS				
2001				
April	16.6	10.2	13.9	40.8
May	16.7	13.4	12.2	42.2
June	15.1	12.2	11.7	39.1
July	12.4	15.5	11.5	39.4
August	15.5	17.1	11.3	43.9

...continued

10

DURATION OF UNEMPLOYMENT, BY SEX AND MAJOR STATISTICAL REGION — *continued*

	Number of persons unemployed for			Total unemployed persons '000
	Under 13 weeks	13 and under 52 weeks	52 weeks and over	
	'000	'000	'000	
VICTORIA				
MALES				
2001				
April	39.9	26.0	22.8	88.8
May	35.4	28.9	18.6	82.8
June	33.0	25.1	21.9	80.0
July	36.9	27.5	18.2	82.6
August	40.7	29.4	18.9	89.0
FEMALES				
2001				
April	35.0	19.2	12.9	67.1
May	32.5	25.8	16.2	74.6
June	29.2	22.6	14.6	66.4
July	28.9	23.0	13.0	64.9
August	28.6	22.2	12.2	63.0
PERSONS				
2001				
April	75.0	45.3	35.7	155.9
May	68.0	54.7	34.8	157.4
June	62.2	47.7	36.5	146.4
July	65.9	50.5	31.2	147.5
August	69.3	51.6	31.1	152.0

Source: ABS data available on request, Labour Force.

11

JOB VACANCIES

Month	Victoria			Australia	
	Job vacancies '000	Sector		Job vacancy rate %	Job vacancy rate %
		Public	Private		
2000					
May	26.2	6.7	19.5	1.28	1.36
August	38.8	4.1	34.7	1.86	1.59
November	35.2	5.0	30.2	1.69	1.46
2001					
February	29.5	3.7	25.7	1.41	1.30
May	23.8	3.2	20.6	1.11	1.10
August	28.7	3.8	24.9	1.39	1.24

Source: Job Vacancies, Australia (Cat. no. 6354.0).

Month	Disputes		Employees involved				Working days lost			Rate per thousand employees, 12 months ended
	Commenced in period	Total	Newly involved	Total	Manufacturing	Construction	Education, health, community services	Other industries	Total	
	no.	no.	'000	'000	'000	'000	'000	'000	'000	
2000										
April	8	15	1.7	4.2	4.0	4.0	0.5	1.4	9.9	122
May	23	27	8.8	9.0	1.9	7.0	—	2.1	11.0	124
June	19	24	6.2	6.7	6.8	0.3	—	3.8	10.9	121
July	22	27	7.3	9.9	1.0	3.6	2.0	0.5	7.1	114
August	25	36	7.0	8.1	11.2	1.4	0.3	0.8	13.8	86
September	21	31	10.4	12.0	8.0	2.0	0.7	0.6	11.4	79
October	16	24	9.6	11.1	7.9	8.7	—	0.2	16.8	83
November	22	28	2.2	2.6	5.4	0.9	—	0.8	7.1	73
December	15	19	2.3	2.6	3.2	0.4	0.2	0.5	4.2	71
2001										
January	18	21	2.6	2.7	2.2	1.3	—	0.1	3.6	69
February	20	23	2.7	2.9	9.2	1.5	—	0.1	10.8	64
March	22	25	11.1	11.8	3.6	8.2	—	1.5	13.3	60
April	20	25	1.8	2.8	1.6	0.3	—	1.8	3.7	57
May	17	20	7.8	8.3	6.8	4.3	—	2.3	13.5	58
June	16	20	2.1	2.8	9.0	1.6	—	0.1	10.8	58

Source: *Industrial Disputes, Australia* (Cat. no. 6321.0); ABS data available on request, *Industrial Disputes*.

AVERAGE WEEKLY EARNINGS OF EMPLOYEES, BY SEX: ALL SERIES

	Males			Females			Persons		
	Full-time ordinary time earnings	Full-time adult total earnings	All males total earnings	Full-time ordinary time earnings	Full-time adult total earnings	All females total earnings	Full-time ordinary time earnings	Full-time adult total earnings	All employees total earnings
ORIGINAL(\$)									
2000									
February	797.80	843.70	732.30	696.70	710.00	492.60	761.30	795.40	616.20
May	799.10	850.10	739.60	706.00	722.60	504.80	765.90	804.70	626.30
August	813.10	861.40	741.80	724.10	740.40	513.80	781.60	818.60	632.30
November	808.70	857.00	737.80	716.20	732.70	509.80	776.20	813.30	627.60
2001									
February	826.20	865.60	748.00	736.60	749.90	533.10	794.00	824.00	645.20
May	836.50	883.60	761.10	733.40	747.30	519.60	799.60	834.90	644.10
SEASONALLY ADJUSTED(\$)									
2000									
February	794.60	844.60	727.10	698.10	712.60	489.20	761.10	797.00	611.50
May	798.50	850.80	744.30	706.40	723.20	505.30	766.00	805.70	628.50
August	816.00	864.30	747.80	723.80	740.40	514.20	782.10	819.40	635.60
November	809.80	852.60	732.50	714.80	729.30	512.40	775.80	809.80	626.80
2001									
February	822.70	866.50	742.70	738.10	752.70	529.60	793.90	825.80	640.50
May	836.10	884.40	766.00	734.00	748.20	520.10	799.80	836.00	646.50
TREND ESTIMATES(\$)									
2000									
February	791.90	843.40	730.80	700.90	716.50	494.80	759.60	798.00	616.30
May	802.10	852.70	740.30	708.20	724.20	502.30	768.70	806.90	625.10
August	809.00	856.50	741.30	716.50	732.60	511.50	775.90	812.30	630.70
November	815.40	860.50	741.30	724.10	739.40	518.20	782.80	817.60	634.10
2001									
February	823.40	868.10	746.50	730.70	745.20	522.10	790.80	824.50	638.40
May	832.20	878.20	757.00	736.40	750.30	524.60	798.90	832.90	644.40
PERCENTAGE CHANGE (FROM FEBRUARY 2001 TO MAY 2001)									
Original	1.3	2.1	1.8	-0.4	-0.4	-2.5	0.7	1.3	-0.2
Seasonally Adjusted	1.6	2.1	3.1	-0.6	-0.6	-1.8	0.7	1.2	0.9
Trend	1.1	1.2	1.4	0.8	0.7	0.5	1.0	1.0	0.9
PERCENTAGE CHANGE (FROM MAY 2000 TO MAY 2001)									
Original	4.7	3.9	2.9	3.9	3.4	2.9	4.4	3.8	2.8
Seasonally Adjusted	4.7	4.0	2.9	3.9	3.5	2.9	4.4	3.8	2.9
Trend	3.8	3.0	2.3	4.0	3.6	4.4	3.9	3.2	3.1

Source: Average Weekly Earnings, Australia (Cat. no. 6302.0).

14

WAGE COST INDEXES(a)

Quarter ended	Total hourly rates of pay excluding bonuses		Ordinary time hourly rates of pay excluding bonuses	
	Index number	% change from previous quarter	Index number	% change from previous quarter
1997				
September	100.0	..	100.0	..
December	100.7	0.7	100.7	0.7
1998				
March	101.6	0.9	101.6	0.9
June	102.1	0.5	102.1	0.5
September	103.2	1.1	103.2	1.1
December	103.8	0.6	103.8	0.6
1999				
March	104.5	0.7	104.5	0.7
June	105.1	0.6	105.0	0.5
September	106.1	1.0	106.1	1.0
December	106.8	0.7	106.7	0.6
2000				
March	107.6	0.7	107.5	0.7
June	108.3	0.7	108.2	0.7
September	109.4	1.0	109.4	1.1
December	110.4	0.9	110.3	0.8
2001				
March	111.2	0.7	111.2	0.8
June	112.2	0.9	112.1	0.8

(a) Base of each index: September quarter 1997 = 100.0.

Source: Wage Cost Index, Australia (Cat. no. 6345.0).

15

CONSUMER PRICE INDEX(a), BY GROUP: MELBOURNE

Group	Jun qtr 2000	Mar qtr 2001	Jun qtr 2001	% change from Mar qtr 2001 to Jun qtr 2001		% change from Jun qtr 2000 to Jun qtr 2001	
				Melbourne	Weighted average of eight capital cities	Melbourne	Weighted average of eight capital cities
Food	130.0	136.8	138.8	1.5	0.9	6.8	6.6
Alcohol and tobacco	177.3	194.8	198.0	1.6	1.2	11.7	11.6
Clothing and footwear	106.9	112.5	113.2	0.6	1.6	5.9	6.4
Housing	91.7	99.1	98.8	-0.3	0.2	7.7	7.1
Household furnishings, supplies and services	115.7	117.8	119.5	1.4	1.8	3.3	4.6
Health	170.9	177.8	177.7	-0.1	0.2	4.0	3.3
Transportation	131.2	136.2	138.6	1.8	2.0	5.6	5.5
Communication	98.5	104.3	103.7	-0.6	-0.6	5.3	5.1
Recreation	122.4	126.1	125.1	-0.8	-0.2	2.2	3.6
Education	179.4	187.6	187.6	—	—	4.6	4.5
Miscellaneous	153.4	160.2	159.9	-0.2	1.2	4.2	5.2
All groups	125.6	132.2	133.0	0.6	0.8	5.9	6.0

(a) Base of each index: 1989-90 = 100.0.

Source: Consumer Price Index, Australia (Cat. no. 6401.0).

16

HOUSE PRICE INDEXES(a): MELBOURNE AND WEIGHTED AVERAGE OF EIGHT CAPITAL CITIES

Period	Melbourne				Weighted average of eight capital cities			
	Established homes		Project homes		Established homes		Project homes	
	Index number	% change from previous period	Index number	% change from previous period	Index number	% change from previous period	Index number	% change from previous period
1998–1999	126.8	10.9	112.5	3.6	130.4	6.2	113.1	2.5
1999–2000	144.6	14.0	122.0	8.4	142.3	9.1	120.7	6.7
2000–2001	159.1	10.0	136.9	12.2	152.8	7.4	134.9	11.8
2000								
March	145.7	1.5	124.3	2.3	143.9	1.8	122.4	1.5
June	151.6	4.0	124.8	0.4	147.3	2.4	122.9	0.4
September	143.6	-5.3	135.7	8.7	147.1	-0.1	134.3	9.3
December	157.5	9.7	136.4	0.5	150.6	2.4	134.8	0.4
2001								
March	161.8	2.7	138.0	1.2	153.9	2.2	135.1	0.2
June	173.3	7.1	137.6	-0.3	159.4	3.6	135.4	0.2

(a) Base of each index: 1988–89 = 100.0.

Source: House Price Indexes (Cat. no. 6416.0)

17

PRICE INDEXES OF MATERIALS USED IN BUILDING(a): MELBOURNE

Group				% change from Mar qtr 2001 to Jun qtr 2001		% change from Jun qtr 2000 to Jun qtr 2001	
	Jun qtr 2000	Mar qtr 2001	Jun qtr 2001	Melbourne	Weighted average of six state capital cities	Melbourne	Weighted average of six state capital cities
House building (all groups)	124.2	122.8	123.1	0.2	-0.2	-0.9	-0.9
Other than house building							
Structural timber	123.2	122.0	119.7	-1.9	-2.0	-2.8	-6.0
Clay bricks	130.3	130.7	130.6	-0.1	0.0	0.2	0.8
Ready mixed concrete	110.1	107.1	107.2	0.1	-1.2	-2.6	-4.3
Precast concrete products	135.8	146.6	149.2	1.8	0.4	9.9	3.5
Steel decking and cladding	113.0	113.7	111.9	-1.6	-0.3	-1.0	0.3
Structural steel	101.0	100.2	102.0	1.8	0.5	1.0	1.5
Reinforcing steel bar, mesh, etc.	94.0	90.3	88.4	-2.1	-0.4	-6.0	-1.6
Aluminium windows	110.0	113.3	114.5	1.1	1.5	4.1	2.5
Fabricated steel products	126.1	126.1	126.0	-0.1	0.4	-0.1	1.6
Builders' hardware	133.6	134.2	138.4	3.1	3.0	3.6	5.0
Sand and aggregate	120.6	125.5	125.5	—	—	4.1	1.3
Carpet	98.7	96.1	93.7	-2.5	0.3	-5.1	-5.0
Paint and other coatings	164.1	167.3	169.0	1.0	-0.3	3.0	1.0
Non ferrous pipes and fittings	118.2	131.1	131.5	0.3	-1.6	11.3	8.4
All plumbing materials	130.6	131.2	132.9	1.3	0.3	1.8	-0.1
All groups excluding electrical materials and mechanical services	114.7	115.7	116.2	0.4	0.3	1.3	0.9
All electrical materials	117.4	117.1	118.8	1.5	1.3	1.2	-1.1
All mechanical services	121.6	117.3	118.1	0.7	0.5	-2.9	-3.3
All groups	116.0	115.7	116.4	0.6	0.4	0.3	-0.2

(a) Base of each index: 1989–90 = 100.0.

Source: ABS data available on request, Producer Price Indexes, Australia (Cat. no. 6427.0).

<i>Manufacturing subdivision or group</i>	<i>Mar qtr 2000</i>	<i>Jun qtr 2000</i>	<i>Sep qtr 2000</i>	<i>Dec qtr 2000</i>	<i>Mar qtr 2001</i>	<i>Jun qtr 2001</i>	<i>% change from Mar qtr 2001 to Jun qtr 2001</i>	<i>% change from Jun qtr 2000 to Jun qtr 2001</i>
Food, beverages and tobacco	111.6	112.2	116.8	118.3	120.8	128.0	6.0	14.1
Textiles, clothing, footwear & leather								
Textiles and textile products	91.3	96.8	98.7	100.7	102.9	106.7	3.7	10.2
Knitting mills and clothing	102.8	103.7	102.9	107.0	106.3	109.7	3.2	5.8
Footwear	111.1	111.7	112.1	120.1	122.6	126.3	3.0	13.1
Leather and leather products	101.3	104.3	103.4	106.9	108.4	109.9	1.4	5.4
Wood & paper products								
Sawmilling and timber products	123.4	127.7	129.0	131.7	133.1	137.4	3.2	7.6
Paper and paper products	101.0	105.6	107.1	110.3	111.0	111.6	0.5	5.7
Printing and publishing	106.9	109.6	112.2	116.7	117.9	119.2	1.1	8.8
Petroleum, coal, chemical & assoc. products								
Petroleum and coal products	164.5	191.6	205.9	240.5	204.3	220.1	7.7	14.9
Chemicals	114.2	121.5	122.5	124.8	126.9	130.8	3.1	7.7
Rubber and plastics	112.2	116.4	119.6	122.4	125.4	128.2	2.2	10.1
Non metallic mineral products	110.7	110.7	111.1	110.8	111.5	112.5	0.9	1.6
Metal products								
Basic mineral products	94.7	96.7	97.6	102.3	101.7	105.2	3.4	8.8
Fabricated metal products	106.0	107.8	109.7	111.9	112.0	113.1	1.0	4.9
Machinery and equipment								
Transport equipment and parts	120.4	122.9	123.1	125.3	125.2	127.2	1.6	3.5
Electronic equipment & other machinery	103.6	105.6	106.1	107.9	108.1	109.8	1.6	4.0
Other manufacturing	119.9	122.4	123.4	126.3	125.7	126.9	1.0	3.7

(a) Base of each index: 1989-90 = 100.0.

Source: *Producer Price Indexes, Australia (Cat. no. 6427.0)*.

19

PRICE INDEXES OF ARTICLES PRODUCED BY MANUFACTURING INDUSTRY(a): AUSTRALIA

<i>Manufacturing subdivision or group</i>	<i>Mar qtr 2000</i>	<i>Jun qtr 2000</i>	<i>Sep qtr 2000</i>	<i>Dec qtr 2000</i>	<i>Mar qtr 2001</i>	<i>Jun qtr 2001</i>	<i>% change from Mar qtr 2001 to Jun qtr 2001</i>	<i>% change from Jun qtr 2000 to Jun qtr 2001</i>
Food, beverages and tobacco	125.2	127.4	127.2	129.3	132.0	136.9	3.7	7.5
Textiles, clothing, footwear & leather								
Textiles and textile products	103.9	106.7	106.4	108.0	109.4	110.5	1.0	3.6
Knitting mills, clothing, footwear and leather	119.8	119.6	119.1	120.6	121.2	121.9	0.6	1.9
Wood & paper products								
Log sawmilling and other wood products	127.9	130.5	131.3	131.9	130.1	129.5	-0.5	-0.8
Paper and paper products	110.9	111.5	113.1	115.3	115.5	115.6	0.1	3.7
Printing, publishing and recorded media	148.8	149.8	151.5	152.1	152.4	153.6	0.8	2.5
Petroleum, coal, chemical & assoc. products								
Petroleum and coal products	145.0	160.2	190.5	207.0	174.5	188.8	8.2	17.9
Chemicals	112.2	114.5	114.0	116.1	116.1	116.8	0.6	2.0
Rubber and plastics	115.7	115.9	116.2	118.4	120.0	121.6	1.3	4.9
Non metallic mineral products	117.6	117.9	117.8	118.0	117.7	117.7	—	-0.2
Metal products								
Basic metal products	107.9	111.1	112.0	117.4	115.6	116.4	0.7	4.8
Fabricated metal products	115.7	116.8	116.6	116.3	116.7	117.2	0.4	0.3
Machinery and equipment								
Transport equipment and parts	119.9	121.2	121.5	123.9	124.7	126.3	1.3	4.2
Electronic equipment and other machinery	110.1	110.5	110.6	111.8	112.4	114.2	1.6	3.3
Other manufacturing	123.6	125.3	126.8	128.9	129.2	130.4	0.9	4.1

(a) Base of each index: 1989-90 = 100.0.

Source: *Producer Price Indexes, Australia (Cat. no. 6427.0)*.

20

EXPORT PRICE INDEXES(a), BY SELECTED COMMODITIES(b): AUSTRALIA

<i>Period</i>	<i>Live animals, animal products</i>	<i>Vegetable products</i>	<i>Products of chemical or allied industries</i>	<i>Textiles and textile articles</i>	<i>Gold, diamonds and coin</i>	<i>Motor vehicles, aircraft and vessels</i>	<i>All groups</i>
1998-1999	100.7	90.9	95.6	61.4	93.1	113.0	95.7
1999-2000	107.8	83.9	101.5	62.5	93.5	113.2	98.0
2000-2001	126.4	99.8	120.1	74.3	106.0	127.0	114.8
1998							
September	103.7	100.2	100.7	67.6	98.0	117.1	102.0
December	100.9	90.9	98.5	59.2	95.8	112.9	96.9
1999							
March	99.6	88.6	93.5	58.8	92.5	111.6	93.1
June	98.5	83.9	89.8	60.0	86.2	110.2	90.6
September	102.7	80.8	93.2	60.5	83.1	110.5	91.5
December	105.0	83.4	96.3	62.1	94.4	111.5	95.4
2000							
March	107.8	83.1	104.2	60.2	96.0	112.4	99.5
June	115.6	88.1	112.4	67.3	100.5	118.4	105.7
September	116.6	90.9	114.9	69.6	102.1	121.0	107.9
December	124.1	98.4	122.5	71.9	107.9	128.0	115.8
2001							
March	127.5	102.9	121.0	74.8	105.9	127.8	115.3
June	137.2	107.1	121.9	80.8	108.1	131.3	120.3

(a) Base of each index: 1989-90 = 100.0.

(b) AHECC Sections are 01, 02, 06, 11, 14 and 17.

Source: *International Trade Price Indexes, Australia (Cat. no. 6457.0)*.

21

BUSINESS EXPECTATIONS, SHORT-TERM OUTLOOK(a)

Business performance indicators	Expected aggregate change over the previous quarter									
								Dec qtr 2001		
	Dec qtr 1999	Mar qtr 2000	Jun qtr 2000	Sep qtr 2000	Dec qtr 2000	Mar qtr 2001	Jun qtr 2001	Sep qtr 2001	Victoria	Australia
	%	%	%	%	%	%	%	%	%	%
Trading performance										
Operating income	3.0	—	1.4	1.2	1.7	-2.6	-0.4	-0.3	1.8	1.3
Selling prices	0.5	0.3	—	0.2	—	—	-0.4	-0.4	-0.3	-0.4
Profit	9.9	-7.7	9.9	3.9	5.1	-30.5	-6.6	-5.1	10.4	8.9
Investment										
Capital expenditure	2.1	2.3	4.5	1.7	4.0	1.6	4.8	3.2	-2	0.3
Inventories	-0.3	-1.3	-0.3	-1.0	0.2	-1.6	-0.7	-1.9	-1.1	-0.9
Employment										
Full-time equivalent	0.1	-0.2	—	-0.3	-0.8	-1.5	-0.5	-0.3	-1.4	-1.2

(a) Short-term outlook refers to the expected change between the calendar quarter in which the data are reported and the following calendar quarter. For example, the estimates for December quarter 2001 reflect the expectations of businesses during September quarter 2001 for future performance over the following calendar quarter.

Source: Australian Business Expectations (Cat. no. 5250.0).

22

BUSINESS EXPECTATIONS, MEDIUM-TERM OUTLOOK(a)

Business performance indicators	Expected aggregate change over the same quarter of the previous year									
								Sep qtr 2002		
	Sep qtr 2000	Dec qtr 2000	Mar qtr 2001	Jun qtr 2001	Sep qtr 2001	Dec qtr 2001	Mar qtr 2002	Jun qtr 2002	Victoria	Australia
	%	%	%	%	%	%	%	%	%	%
Trading performance										
Operating income	3.5	1.9	2.3	2.0	2.1	1.4	1.9	0.7	0.7	0.9
Selling prices	1.5	0.8	1.2	1.3	1.0	0.7	0.2	0.3	-0.2	0.1
Profit	11.8	-5.0	13.1	11.6	7.2	-5.4	5.7	4.8	9.1	7.9
Investment										
Capital expenditure	1.9	2.4	3.2	2.4	0.4	2.3	5.5	3.5	-2	1.1
Inventories	-0.6	-0.2	-0.1	-0.7	-1.2	-1.3	-0.1	-1.8	-2.2	-1.4
Employment										
Full-time equivalent	0.1	0.3	0.3	-0.6	0.3	0.1	0.6	-0.9	-0.9	-0.7

(a) Medium-term outlook refers to the expected change between the calendar quarter in which the data are reported and the same calendar quarter in the following year. For example, the estimates for September quarter 2002 reflect the expectations of businesses during September quarter 2001 for future performance over the following four calendar quarters.

Source: Australian Business Expectations (Cat. no. 5250.0).

23

PRIVATE NEW CAPITAL EXPENDITURE, BY TYPE OF ASSET AND INDUSTRY: ORIGINAL

Period	Selected industries				Type of asset		
	Mining	Manufacturing	Other selected industries	Total	New buildings and structures	Equipment, plant and machinery	All assets
	\$m	\$m	\$m	\$m	\$m	\$m	\$m
1998–1999	1 234	2 954	7 180	11 368	3 211	8 157	11 368
1999–2000	615	3 363	6 999	10 977	2 761	8 217	10 977
2000–2001	363	3 113	6 708	10 185	2 246	7 938	10 185
2000							
March	66	721	1 622	2 409	595	1 814	2 409
June	151	796	1 819	2 766	656	2 110	2 766
September	77	965	1 623	2 665	566	2 099	2 665
December	108	771	1 729	2 607	598	2 010	2 607
2001							
March	81	575	1 528	2 184	436	1 748	2 184
June	97	802	1 829	2 728	646	2 082	2 728

Source: Private New Capital Expenditure, State Estimates (Cat. no. 5646.0); ABS data available on request, Private New Capital Expenditure.

24

PRIVATE NEW CAPITAL EXPENDITURE, BY TYPE OF ASSET: SEASONALLY ADJUSTED AND TREND

Period	Seasonally adjusted				Trend			
	All assets			% change from previous period	All assets			% change from previous period
	New buildings and structures	Equipment, plant and machinery			New buildings and structures	Equipment, plant and machinery		
\$m	\$m	\$m	\$m	\$m	\$m	\$m	\$m	
1998–1999	3 234	8 143	11 377	3.1	3 120	8 147	11 267	0.6
1999–2000	2 760	8 212	10 972	-3.6	2 701	8 268	10 968	-2.7
2000–2001	2 242	7 945	10 186	-7.2	2 259	7 895	10 153	-7.4
2000								
March	672	2 036	2 708	-3.0	670	2 064	2 734	-1.3
June	663	2 001	2 664	-1.6	627	2 043	2 670	-2.3
September	541	2 107	2 648	-0.6	572	2 008	2 580	-3.4
December	556	1 895	2 451	-7.4	539	1 979	2 518	-2.4
2001								
March	492	1 970	2 462	0.4	551	1 956	2 507	-0.4
June	653	1 972	2 625	6.6	596	1 952	2 548	1.6

Source: Private New Capital Expenditure, State Estimates (Cat. no. 5646.0).

Month	Current bearing interest	Current not bearing interest	Term(a)	Investment savings	Other(b)	Total
	\$m	\$m	\$m	\$m	\$m	\$m
2000						
May	20 893	4 512	56 734	6 523	10 092	98 754
June	19 997	4 537	58 905	6 466	10 072	99 977
July	19 803	4 421	57 930	6 478	10 452	99 085
August	20 528	4 389	55 794	6 516	10 165	97 393
September	20 390	4 806	53 801	6 542	10 834	96 374
October	20 668	5 257	49 846	6 501	10 911	93 183
November	20 624	4 759	46 364	6 444	11 354	89 545
December	21 202	5 297	48 545	6 431	11 329	92 804
2001						
January	21 868	4 875	50 326	6 368	11 557	94 993
February	21 383	4 664	54 042	6 318	10 950	97 357
March	21 830	4 692	51 018	6 379	11 987	95 905
April	22 475	4 959	54 515	6 424	11 440	99 815
May	22 698	4 522	58 301	6 473	12 567	104 560
June	24 291	5 002	57 180	6 633	11 664	104 769
July	23 981	4 897	54 534	6 624	11 881	101 916

(a) Includes certificates of deposit.

(b) Includes statement savings and passbook/school savings.

Source: Unpublished data, Australian Prudential Regulating Authority.

Period	Fixed loan facilities						Revolving credit facilities	Total commercial finance
	Construction	Purchase of real property	Purchase of plant and equipment	Wholesale	Other	Total		
	\$m	\$m	\$m	\$m	\$m	\$m	\$m	\$m
1998-1999	1 329.0	5 597.6	2 073.6	1 519.4	10 705.1	21 224.7	23 403.1	44 627.9
1999-2000	2 086.6	7 432.2	2 520.0	699.6	8 982.2	21 720.7	19 560.3	41 281.0
2000-2001	1 846.5	7 529.9	2 680.4	944.0	11 614.6	24 615.4	19 569.6	44 185.0
2000								
July	234.7	563.5	178.6	93.8	720.1	1 790.8	1 486.8	3 277.5
August	176.5	549.2	225.1	77.3	809.9	1 838.0	1 100.3	2 938.3
September	155.5	509.4	225.7	71.0	896.4	1 858.1	1 947.3	3 805.4
October	160.4	523.3	179.2	66.1	989.0	1 918.0	1 203.5	3 121.5
November	181.7	581.8	204.1	105.3	497.9	1 570.8	1 464.4	3 035.2
December	134.6	527.8	223.4	93.7	651.9	1 631.3	2 353.6	3 984.9
2001								
January	115.7	555.7	172.6	92.8	491.3	1 428.1	1 591.2	3 019.3
February	97.1	516.2	196.1	50.1	1 641.2	2 500.5	1 825.1	4 325.6
March	240.9	660.0	240.7	70.6	1 362.9	2 574.9	1 508.0	4 083.0
April	133.5	617.8	249.9	65.0	422.5	1 488.7	1 369.9	2 858.6
May	74.9	819.3	228.1	75.0	1 395.0	2 592.2	1 834.2	4 426.5
June	141.1	1 106.1	357.0	83.4	1 736.5	3 424.0	1 885.2	5 309.2
July	193.1	939.3	279.0	84.7	543.0	2 039.1	1 233.9	3 272.9

Source: ABS data available on request, Lending Finance, Australia.

27

LEASE FINANCE COMMITMENTS(a), BY PURPOSE

	Cars, station wagons etc.(b)	Trucks, trailers and buses(c)	Manu- facturing equip- ment	Agricultural machinery and equipment	Electronic data processing equipment	Office machines	Shop and office furniture(d)	Other goods(e)	Total lease finance
Period	\$m	\$m	\$m	\$m	\$m	\$m	\$m	\$m	\$m
1998-1999	836.1	280.9	228.0	76.6	262.7	183.0	56.5	203.2	2 126.9
1999-2000	638.0	233.8	221.6	43.1	355.7	181.1	61.4	144.1	1 878.9
2000-2001	475.2	111.7	78.6	42.2	373.5	166.3	55.3	105.0	1 407.9
2000									
July	31.6	8.4	3.8	1.1	22.0	13.8	2.5	8.7	92.0
August	43.3	5.9	7.8	2.4	31.0	12.3	5.3	9.7	117.7
September	36.5	8.8	12.1	2.0	28.9	13.3	3.7	10.4	115.7
October	35.5	10.7	6.7	4.1	27.3	12.1	4.0	7.0	107.3
November	40.0	11.2	5.1	3.0	35.3	15.5	5.2	8.6	123.9
December	43.3	16.2	8.9	2.7	95.2	14.7	7.2	8.8	196.9
2001									
January	39.9	6.2	2.6	10.1	29.0	10.1	2.4	4.7	105.1
February	34.4	5.6	3.9	1.6	12.3	11.2	2.0	4.0	74.9
March	39.2	6.8	6.4	1.6	21.4	14.1	2.7	3.9	96.1
April	34.9	6.8	1.5	4.3	23.6	16.2	3.0	9.5	99.6
May	40.9	9.9	5.4	3.0	15.2	17.5	5.2	13.2	110.3
June	55.7	15.2	14.5	6.3	32.4	15.5	12.0	16.6	168.3
July	55.6	14.5	6.7	3.2	31.2	11.7	4.9	15.2	143.1

(a) Excludes leveraged leases.

(b) Includes small passenger vehicles.

(c) Includes coaches, other motor vehicles and other transport equipment.

(d) Includes fittings and equipment.

(e) Includes construction and earthmoving equipment.

Source: ABS data available on request, Lending Finance, Australia.

28

PERSONAL FINANCE COMMITMENTS

Period	Fixed loan facilities					Revolving credit facilities				
	Purchase of motor vehicles (excl. motor cycles)	Purchase of blocks of land(a)	Debt con- solidation & refinan- cing	Other	All personal fixed loans	New and increased credit limits	Cancellations and reductions in credit limits	Total used and unused credit limits available at end of period(b)	Credit used at end of period(b)	Total personal finance
	\$m	\$m	\$m	\$m	\$m	\$m	\$m	\$m	\$m	\$m
1998-1999	2 467.1	396.2	938.3	1 399.7	5 201.2	5 861.5	1 820.8	19 155.1	8 137.6	11 062.7
1999-2000	2 622.0	374.1	990.3	1 460.6	5 447.0	8 108.8	2 455.3	25 873.1	10 874.8	13 555.8
2000-2001	2 545.9	411.0	1 080.9	1 411.4	5 449.3	8 166.8	3 137.3	28 866.6	12 772.6	13 616.0
2000										
July	188.5	25.1	76.7	99.8	390.1	671.2	327.6	25 966.4	10 904.3	1 061.3
August	263.3	32.5	85.9	119.9	501.5	705.3	263.0	24 329.1	10 950.3	1 206.9
September	197.5	26.7	80.8	116.2	421.2	605.3	241.1	24 692.5	11 001.3	1 026.5
October	209.8	27.8	81.1	109.5	428.1	579.3	270.4	25 032.7	11 146.1	1 007.5
November	218.1	32.4	93.0	108.2	451.7	769.2	224.6	25 571.8	11 463.0	1 220.9
December	215.7	29.9	76.7	115.7	438.0	649.4	206.0	26 134.2	11 693.5	1 087.4
2001										
January	204.2	24.5	79.1	101.4	409.2	587.0	283.4	26 425.0	11 807.8	996.1
February	196.4	30.7	88.7	108.8	424.6	555.6	239.8	26 853.0	12 033.2	980.1
March	220.5	40.0	95.4	120.0	475.8	702.8	228.7	27 332.1	12 126.7	1 178.6
April	188.6	37.9	86.7	111.8	424.9	577.9	279.4	27 593.4	12 233.4	1 002.8
May	223.7	53.1	116.5	139.7	533.0	790.8	266.0	28 116.3	12 512.2	1 323.8
June	219.8	50.7	120.5	160.3	551.2	972.9	307.5	28 866.6	12 772.6	1 524.0
July	216.7	49.3	118.2	140.3	524.5	834.2	355.6	28 616.8	12 824.9	1 358.7

(a) Individual residential blocks of land.

(b) This data item is a STOCK (i.e. balance at end of month) item. Users of the data should exercise care to ensure that this item is not aggregated.

Source: ABS data available on request, Lending Finance, Australia.

Period	Original series		Seasonally adjusted		Trend estimates	
	no.	\$m	no.	\$m	no.	\$m
VALUE						
1998–1999	122 029	14 377	121 645	14 322	121 709	14 306
1999–2000	130 348	17 309	129 897	17 250	130 236	17 290
2000–2001	126 452	16 667	126 695	16 689	126 535	16 686
2000						
July	9 305	1 165	9 719	1 214	9 775	1 245
August	10 911	1 367	10 482	1 335	9 904	1 242
September	9 368	1 166	9 634	1 203	10 102	1 255
October	10 210	1 252	10 076	1 234	10 297	1 280
November	11 282	1 388	10 888	1 335	10 413	1 307
December	10 153	1 330	10 937	1 410	10 446	1 333
2001						
January	9 104	1 231	10 472	1 388	10 413	1 360
February	9 349	1 230	9 651	1 284	10 467	1 401
March	11 278	1 561	10 723	1 469	10 642	1 456
April	10 197	1 412	10 502	1 480	10 953	1 525
May	13 146	1 821	11 967	1 674	11 357	1 603
June	12 149	1 744	11 644	1 663	11 766	1 679
July	12 473	1 789	12 507	1 806	12 162	1 749
PERCENTAGE CHANGE (FROM PREVIOUS MONTH)						
2000						
July	-0.5	-6.8	11.8	5.4	-0.1	-2.0
August	17.3	17.3	7.9	10.0	1.3	-0.2
September	-14.1	-14.7	-8.1	-9.9	2.0	1.0
October	9.0	7.4	4.6	2.6	1.9	2.0
November	10.5	10.9	8.1	8.2	1.1	2.1
December	-10.0	-4.2	0.5	5.6	0.3	2.0
2001						
January	-10.3	-7.4	-4.3	-1.6	-0.3	2.0
February	2.7	-0.1	-7.8	-7.5	0.5	3.0
March	20.6	26.9	11.1	14.4	1.7	3.9
April	-9.6	-9.5	-2.1	0.7	2.9	4.7
May	28.9	29.0	13.9	13.1	3.7	5.1
June	-7.6	-4.2	-2.7	-0.7	3.6	4.7
July	2.7	2.6	7.4	8.6	3.4	4.2

(a) For owner occupation. Excludes alterations and additions. Includes refinancing.

Source: *Housing Finance for Owner Occupation, Australia (Cat. no. 5609.0)*; ABS data available on request, *Housing Finance for Owner Occupation*.

30

SECURED HOUSING FINANCE COMMITMENTS(a), DWELLING UNITS, BY TYPE OF BORROWER

Period	First home buyers				Other home buyers			
	Number of dwellings financed	Number as proportion of all dwellings financed	Value of commitments	Average borrowing size	Number of dwellings financed	Number as proportion of all dwellings financed	Value of commitments	Average borrowing size
	no.	%	\$m	\$'000	no.	%	\$m	\$'000
1998-1999	30 019	24.6	3 376.2	112.5	92 010	75.4	11 000.1	119.6
1999-2000	32 144	24.7	4 092.6	127.3	98 204	75.3	13 216.3	134.6
2000-2001	30 479	24.1	3 736.1	122.6	95 873	75.9	12 930.4	134.7
2000								
July	2 595	27.9	304.4	117.3	6 710	72.1	860.2	128.2
August	3 098	28.4	351.9	113.6	7 813	71.6	1 014.9	129.9
September	2 625	28.0	296.4	112.9	6 743	72.0	869.8	129.0
October	2 434	23.8	278.7	114.5	7 776	76.2	972.8	125.1
November	2 728	24.2	317.5	116.4	8 554	75.8	1 071.0	125.2
December	2 416	23.8	289.2	119.7	7 737	76.2	1 040.6	134.5
2001								
January	1 984	21.8	261.5	131.8	7 120	78.2	969.7	136.2
February	1 977	21.1	241.6	122.2	7 372	78.9	988.6	134.1
March	2 291	20.3	296.7	129.5	8 987	79.7	1 263.6	140.6
April	2 331	22.9	305.6	131.1	7 866	77.1	1 106.0	140.6
May	3 053	23.2	396.0	129.7	10 093	76.8	1 425.1	141.2
June	2 947	24.3	396.7	134.6	9 202	75.7	1 348.1	146.5
July	3 276	26.3	449.1	137.1	9 197	73.7	1 340.0	145.7

(a) For owner occupation. Excludes alterations and additions. Includes refinancing.

Source: Housing Finance for Owner Occupation, Australia (Cat. no. 5609.0); ABS data available on request, Housing Finance for Owner Occupation, Australia.

31

BUILDING APPROVALS: ALL SERIES

Period	Dwelling units(a)			Total value of all building			
	no.	% change from previous period	Value of new residential building(a)	Value of residential alterations, additions and conversions(b)	Value of all residential building	% change from previous period	
			\$m	\$m	\$m		\$m
ORIGINAL							
1998-1999	39 722	9.0	4 552.0	951.2	5 503.1	8 628.8	10.3
1999-2000	50 133	26.2	6 418.0	1 211.0	7 629.0	10 840.8	25.6
2000-2001	35 541	-29.1	5 110.2	1 190.9	6 301.0	10 361.8	-4.4
2000							
June	3 280	-5.2	429.7	111.6	541.3	892.0	11.0
July	3 365	2.6	465.2	125.7	590.9	1 153.5	29.3
August	2 746	-18.4	370.0	105.0	475.0	742.7	-35.6
September	2 562	-6.7	346.1	73.0	419.1	712.0	-4.1
October	2 099	-18.1	291.3	108.0	399.3	628.1	-11.8
November	3 114	48.4	438.5	97.8	536.3	826.7	31.6
December	3 015	-3.2	470.0	79.4	549.4	861.1	4.2
2001							
January	2 607	-13.5	387.3	73.2	460.5	727.3	-15.5
February	3 186	22.2	450.3	89.4	539.7	797.6	9.7
March	3 394	6.5	528.5	126.1	654.6	1 156.2	45.0
April	2 456	-27.6	365.6	78.8	444.3	791.2	-31.6
May	3 668	49.3	532.0	116.7	648.7	1 165.9	47.4
June	3 329	-9.2	465.5	117.7	583.2	799.6	-31.4
July	3 727	12.0	544.0	108.8	652.8	942.0	17.8
August	5 691	52.7	1 049.2	136.9	1 186.1	1 485.0	57.6

For footnotes see end of table.

...continued

Period	Dwelling units(a)		Value of residential alterations, additions and conversions(b)		Total value of all building		
	no.	% change from previous period	Value of new residential building(a) \$m	\$m	Value of all residential building \$m	\$m	% change from previous period
SEASONALLY ADJUSTED							
2000							
June	3320	-3.8	428.0	110.9	538.9	921.6	18.8
July	3633	9.4	497.7	137.7	635.4	1 221.4	32.5
August	2542	-30.0	356.8	96.5	453.3	691.2	-43.4
September	2609	2.6	354.1	72.9	426.9	707.8	2.4
October	2223	-14.8	313.4	93.2	406.7	672.0	-5.1
November	2879	29.5	410.8	92.6	503.4	775.4	15.4
December	3137	8.9	478.1	97.6	575.7	898.1	15.8
2001							
January	3122	-0.5	458.4	90.3	548.7	844.5	-6.0
February	2 949	-5.5	422.1	93.6	515.8	727.9	-13.8
March	2 902	-1.6	434.4	108.9	543.3	1 058.8	45.5
April	2 602	-10.3	408.4	75.2	483.5	820.1	-22.5
May	3 572	37.2	498.7	113.1	611.7	1 145.8	39.7
June	3 493	-2.2	468.2	126.4	594.6	816.5	-28.7
July	4 014	14.9	604.8	113.3	718.0	1 055.7	29.3
August	5 378	34.0	1 039.1	128.5	1 167.6	1 366.9	29.5
TREND ESTIMATES							
2000							
June	3 358	-8.9	439.0	110.5	549.4	830.2	-4.5
July	3 058	-8.9	407.9	107.6	515.6	788.0	-5.1
August	2 830	-7.5	386.2	102.4	488.6	756.4	-4.0
September	2 698	-4.7	377.7	96.1	473.9	738.0	-2.4
October	2 686	-0.4	383.3	91.9	475.1	740.3	0.3
November	2 743	2.1	397.4	90.3	487.7	758.6	2.5
December	2 830	3.2	416.0	90.5	506.5	795.4	4.8
2001							
January	2 906	2.7	430.5	92.3	522.8	840.2	5.6
February	2 940	1.2	433.8	94.6	528.4	877.0	4.4
March	2 979	1.3	435.0	97.0	532.0	905.9	3.3
April	3 103	4.2	450.4	101.2	551.6	934.1	3.1
May	3 344	7.8	487.8	107.1	594.9	966.8	3.5
June	3 665	9.6	542.1	113.4	655.6	1 002.6	3.7
July	4 005	9.3	603.5	119.5	723.0	1 038.5	3.6
August	4 335	8.2	665.5	124.5	790.0	1 072.9	3.3

(a) Valued at \$10,000 and over.

(b) Includes alterations and additions creating dwellings, alterations and additions not creating dwellings, and conversions.

Source: *Building Approvals, Victoria (Cat. no. 8731.2)*; ABS data available on request, *Building Approvals*.

Period	Number of new dwelling units(a)				Value of building approvals				
	All new dwelling units(b)				All building				
	Private sector	Public sector	Proportion of State total		New dwelling units(a)	Residential alterations, additions and conversions(c)	Non-residential building(d)	Proportion of State total	
no.	no.	no.	%	\$m	\$m	\$m	\$m	%	
MELBOURNE									
1998–1999	28 615	666	29 276	76.8	3 600.0	800.3	2 642.3	6 376.8	73.9
1999–2000	37 091	611	37 702	77.7	5 142.4	1 019.4	2 650.9	8 812.7	81.3
2000–2001	26 229	374	26 603	77.7	4 111.5	990.5	3 470.5	8 572.5	82.7
2000									
June	2 434	43	2 477	78.0	348.1	93.3	305.4	746.7	83.7
July	2 320	36	2 356	81.5	398.9	114.9	523.0	1 036.8	89.9
August	1 948	32	1 980	77.0	294.3	88.9	227.7	610.9	82.3
September	1 921	32	1 953	77.1	276.9	57.1	216.2	550.2	77.3
October	1 380	68	1 448	71.2	214.5	87.3	178.3	480.1	76.4
November	2 302	15	2 317	77.7	356.5	82.8	237.9	677.2	81.9
December	2 377	11	2 388	80.8	395.4	63.2	260.6	719.1	83.5
2001									
January	1 983	51	2 034	79.1	315.1	59.0	225.7	599.9	82.5
February	2 490	25	2 515	79.6	363.2	73.9	232.7	669.8	84.0
March	2 582	19	2 601	79.8	436.2	106.7	434.6	977.5	84.6
April	1 810	19	1 829	75.3	287.9	63.3	309.3	660.5	83.5
May	2 729	15	2 744	75.4	416.2	97.1	451.1	964.5	82.7
June	2 387	51	2 438	75.7	356.5	96.2	173.1	626.0	78.3
July	2 672	138	2 810	75.6	418.7	92.8	214.9	726.4	77.1
August	4 485	41	4 526	80.2	894.5	114.3	244.3	1 253.2	84.4
BALANCE OF VICTORIA									
1998–1999	8 597	228	8 830	23.2	951.9	150.9	483.4	2 252.0	26.1
1999–2000	10 641	176	10 817	22.3	1 275.6	191.6	560.9	2 028.1	18.7
2000–2001	7 550	91	7 645	22.3	998.7	200.4	590.1	1 789.3	17.3
2000									
June	692	6	698	22.0	81.6	18.3	45.3	145.3	16.3
July	531	2	533	18.5	66.3	10.8	39.7	116.7	10.1
August	564	27	591	23.0	75.7	16.1	39.9	131.8	17.7
September	578	—	578	22.9	69.2	15.8	76.7	161.9	22.7
October	583	3	586	28.8	76.8	20.7	50.4	147.9	23.6
November	662	—	662	22.3	82.0	15.0	52.4	149.5	18.1
December	562	5	567	19.2	74.7	16.2	51.1	142.0	16.5
2001									
January	531	7	538	20.9	72.1	14.2	41.1	127.4	17.5
February	642	3	645	20.4	87.1	15.6	25.1	127.7	16.0
March	655	4	659	20.2	92.3	19.4	66.9	178.6	15.4
April	595	5	600	24.7	77.7	15.5	37.6	130.7	16.5
May	875	21	896	24.6	115.7	19.6	66.1	201.4	17.3
June	772	14	786	24.3	109.0	21.5	43.2	173.7	21.7
July	875	32	907	24.4	125.3	16.0	74.3	215.6	22.9
August	1 093	27	1 120	19.8	154.7	22.6	54.5	231.8	15.6

For footnotes see end of table.

...continued

	Number of new dwelling units(a)				Value of building approvals				
	All new dwelling units(b)				All building				
	Private sector	Public sector	Proportion of State total		New dwelling units(a)	Residential alterations, additions and conversions(c)	Non-residential building(d)	Proportion of State total	
	no.	no.	no.	%	\$m	\$m	\$m	\$m	%
VICTORIA									
1999–2000	47 732	787	48 519	100	6 418.0	1 211.0	3 211.8	10 840.8	100
2000–2001	33 779	465	34 244	100	5 110.2	1 190.9	4 060.6	10 361.8	100
2000									
August	2 512	59	2 571	100	370.0	105.0	267.6	742.7	100
September	2 499	32	2 531	100	346.1	73.0	292.9	712.0	100
October	1 963	71	2 034	100	291.3	108.0	228.7	628.1	100
November	2 964	15	2 979	100	438.5	97.8	290.4	826.7	100
December	2 939	16	2 955	100	470.0	79.4	311.6	861.1	100
2001									
January	2 514	58	2 572	100	387.3	73.2	266.8	727.3	100
February	3 132	28	3 160	100	450.3	89.4	257.8	797.6	100
March	3 237	23	3 260	100	528.5	126.1	501.5	1 156.2	100
April	3 405	24	2 429	100	365.6	78.8	346.9	791.2	100
May	3 604	36	3 640	100	532.0	116.7	517.2	1 165.9	100
June	3 159	65	3 224	100	465.5	117.7	216.4	799.6	100
July	3 547	170	3 717	100	544.0	108.8	289.2	942.0	100
August	5 578	68	5 646	100	1 049.2	136.9	298.9	1 485.0	100

(a) Valued at \$10,000 and over.

(b) Excludes dwelling units created as a result of conversions or construction of non-residential buildings.

(c) Includes alterations and additions creating dwellings, alterations and additions not creating dwellings, and conversions.

(d) Valued at \$50,000 and over.

Source: *Building Approvals, Victoria* (Cat. no. 8731.2).

Local Government Area	June quarter 2001			12 months ending June 2001			
	Number of dwelling units(a)	Number of building jobs	Value of all approvals	Number of dwelling units(a)	Number of building jobs	Value of all approvals	Number of dwelling units per '000 population
	no.	no.	\$m	no.	no.	\$m	
Alpine (S)	21	42	3.3	101	186	23.9	8.0
Ararat (RC)	10	23	5.3	30	76	11.1	2.7
Ballarat (C)	135	256	45.0	463	878	151.0	5.6
Banyule (C)	120	203	31.6	457	731	122.5	3.8
Bass Coast (S)	185	233	27.0	591	797	85.4	25.5
Baw Baw (S)	62	96	11.2	210	370	43.9	5.9
Bayside (C)	145	285	75.9	698	1 117	239.3	7.7
Boroondara (C)	135	356	80.5	548	1 389	321.2	3.4
Brimbank (C)	334	269	66.7	1 123	1 268	241.5	6.8
Buloke (S)	—	4	0.4	3	21	2.5	0.4
Campaspe (S)	42	87	22.0	186	333	54.2	5.2
Cardinia (S)	145	212	23.8	513	750	85.2	11.2
Casey (C)	810	1 067	132.0	2 642	3 389	449.6	15.1
Central Goldfields (S)	8	17	1.1	29	71	6.9	2.3
Colac-Otway (S)	48	86	12.0	149	234	46.1	7.4
Corangamite (S)	8	50	6.7	35	140	16.3	2.1
Darebin (C)	131	250	37.3	493	958	149.5	3.8
DeLatite (S)	23	51	4.8	103	199	27.3	5.1
East Gippsland (S)	57	108	11.6	228	420	42.7	5.8
Frankston (C)	286	317	50.4	759	1 000	150.6	6.7

For footnotes see end of table.

...continued

Local Government Area	June quarter 2001			12 months ending June 2001			
	Number of dwelling units(a)	Number of building jobs	Value of all approvals	Number of dwelling units(a)	Number of building jobs	Value of all approvals	Number of dwelling units per '000 population
	no.	no.	\$m	no.	no.	\$m	
Gannawarra (S)	8	28	2.5	21	95	8.8	1.8
Glen Eira (C)	179	265	41.3	532	993	162.9	4.3
Glenelg (S)	8	37	2.5	33	171	17.6	1.7
Golden Plains (S)	31	42	4.4	85	149	14.6	5.9
Greater Bendigo (C)	154	260	32.9	495	984	118.7	5.6
Greater Dandenong (C)	55	210	39.2	321	644	131.9	2.4
Greater Geelong (C)	476	660	88.1	1 463	2 252	288.1	7.7
Greater Shepparton (C)	77	156	20.7	323	623	84.7	5.7
Hepburn (S)	21	48	8.4	86	200	19.2	6.1
Hindmarsh (S)	3	8	4.5	9	29	5.8	1.4
Hobsons Bay (C)	107	165	36.5	422	702	124.6	5.1
Horsham (RC)	22	57	6.4	72	205	24.9	4.0
Hume (C)	361	449	94.2	1 274	1 734	319.3	9.6
Indigo (S)	24	42	4.0	84	160	16.1	5.9
Kingston (C)	260	301	59.6	877	1 214	216.9	6.5
Knox (C)	226	361	146.9	862	1 296	302.8	5.9
Latrobe (C)	51	133	11.6	161	475	43.6	2.3
Loddon (S)	1	10	0.6	14	55	7.0	1.6
Macedon Ranges (S)	55	103	17.0	229	443	55.2	6.3
Manningham (C)	190	181	44.4	522	664	129.5	4.5
Maribymong (C)	87	194	37.2	538	624	153.9	8.8
Maroondah (C)	110	192	27.7	540	915	206.8	5.4
Melbourne (C)	373	275	228.2	2 869	1 111	1 684.5	55.1
Melton (S)	426	447	65.4	1 445	1 593	225.6	28.6
Mildura (RC)	146	152	23.9	363	519	72.4	7.5
Mitchell (S)	74	120	14.7	231	391	45.3	8.5
Moira (S)	33	73	6.3	121	266	26.0	4.6
Monash (C)	174	296	55.9	796	1 286	298.7	4.9
Moonee Valley (C)	91	215	37.6	363	810	125.4	3.2
Moorabool (S)	40	73	8.1	147	276	30.1	6.1
Moreland (C)	165	225	29.7	722	933	134.3	5.3
Mornington Peninsula (S)	475	681	95.2	1 581	2 574	343.0	12.4
Mount Alexander (S)	19	36	3.2	89	160	22.0	5.4
Moyne (S)	15	38	4.7	47	145	25.6	2.9
Murrindindi (S)	36	61	5.3	112	192	19.2	8.6
Nillumbik (S)	42	112	13.0	202	487	67.8	3.4
Northern Grampians (S)	8	18	1.3	49	100	11.9	3.8
Port Phillip (C)	382	198	115.7	2 074	745	507.6	25.4
Pyrenees (S)	4	11	1.5	16	46	3.9	2.4
Queenscliffe (B)	5	15	4.7	36	62	11.3	10.5
South Gippsland (S)	52	78	10.5	165	315	35.8	6.5
Southern Grampians (S)	14	49	5.5	44	156	16.3	2.7
Stonnington (C)	138	280	153.8	653	1 039	460.7	7.1
Strathbogie (S)	11	20	2.3	45	92	8.6	4.8
Surf Coast (S)	113	123	23.3	377	518	79.8	18.9
Swan Hill (RC)	18	70	5.6	86	201	19.6	4.1
Towong (S)	4	8	0.8	9	34	2.5	1.5
Wangaratta (RC)	37	75	7.0	83	195	23.4	3.2
Warrnambool (C)	17	23	3.1	133	262	32.7	4.6
Wellington (S)	44	89	8.2	126	318	24.0	3.1
West Wimmera (S)	3	8	0.6	5	22	3.2	1.0
Whitehorse (C)	206	282	51.7	526	1 050	206.4	3.6
Whittlesea (C)	304	350	53.0	1 183	1 333	236.2	10.2
Wodonga (RC)	67	111	10.8	203	390	59.6	6.4
Wyndham (C)	385	454	84.4	1 277	1 583	271.8	14.8
Yarra (C)	156	173	199.9	376	693	324.4	5.4
Yarra Ranges (S)	189	334	43.2	683	1 246	176.1	4.8
Yarriambiack (S)	—	5	0.3	4	16	1.0	0.5
Unincorporated Vic	—	—	—	—	1	—	—
Victoria	9 477	13 492	2 757.8	35 565	50 114	10 360.3	7.5

(a) Valued at \$10,000 and over. Excludes dwelling units created as a result of conversions or construction of non-residential buildings.

Source: ABS data available on request, Building Approvals.

Period	New residential building			Alterations and additions to residential buildings	Non-residential building		
	Houses	Other residential building	Total		Private sector	Total	Total building
	\$m	\$m	\$m		\$m	\$m	\$m
WORK COMMENCED — ORIGINAL							
1997–1998	3 064.7	880.1	3 944.5	912.8	2 691.5	3 291.4	8 145.9
1998–1999	3 502.7	993.8	4 496.3	987.1	2 124.6	3 046.6	8 530.2
1999–2000	4 385.9	1 544.9	5 930.8	1 200.1	2 351.5	3 123.0	10 253.8
1999							
December	1 135.0	333.8	1 468.8	263.3	543.8	676.8	2 408.9
2000							
March	1 115.6	407.3	1 522.9	298.9	594.3	766.5	2 588.2
June	1 096.7	352.5	1 449.2	343.4	668.6	1 022.7	2 815.3
September	754.3	369.2	1 123.6	219.9	667.3	766.3	2 109.9
December	718.6	237.6	956.2	246.0	595.1	738.0	1 940.2
2001							
March	690.3	420.5	1 110.7	192.0	593.7	831.4	2 134.1
WORK DONE — ORIGINAL							
1997–1998	2 862.3	786.0	3 648.7	929.0	2 321.5	3 068.8	7 646.7
1998–1999	3 366.2	947.9	4 314.2	998.1	2 746.6	3 571.0	8 883.2
1999–2000	4 167.3	1 285.3	5 452.7	1 183.3	2 583.6	3 323.9	9 959.9
1999							
December	998.4	287.2	1 285.6	287.1	699.3	876.0	2 448.7
2000							
March	965.2	299.9	1 265.2	272.1	556.0	708.1	2 245.4
June	1 243.1	394.2	1 637.3	361.0	662.5	873.0	2 871.3
September	864.7	331.2	1 195.9	214.0	618.6	812.9	2 222.8
December	773.1	305.7	1 078.8	256.7	643.6	843.1	2 178.6
2001							
March	749.8	293.9	1 043.6	235.4	564.5	767.4	2 046.4
WORK DONE — SEASONALLY ADJUSTED							
1999							
December	933.9	292.7	1 226.6	263.5	643.4	807.6	2 297.6
2000							
March	1 044.0	333.5	1 377.5	299.4	623.7	786.7	2 463.6
June	1 243.2	384.5	1 627.7	344.7	658.7	869.5	2 841.9
September	852.5	299.8	1 152.3	225.2	611.7	807.3	2 184.8
December	724.7	310.8	1 035.5	236.0	593.1	778.3	2 049.7
2001							
March	812.2	325.9	1 138.1	259.4	635.4	853.8	2 251.3

(a) Reference year for chain volume measures is 1998–99. See paragraphs 28 to 31 of the Explanatory Notes in *Building Activity, Victoria* (Cat. no. 8752.2).

Source: *Building Activity, Victoria* (Cat. no. 8752.2).

Local Government Area	Value of building commenced \$'000	Value of building under construction at end of quarter \$'000	Value of building completed \$'000	Value of work yet to be done at end of quarter \$'000	Value of work done \$'000
Alpine (S)	5 113	9 649	1 886	4 569	2 712
Ararat (RC)	109	300	2 506	145	656
Ballarat (C)	6 355	39 078	14 333	19 275	12 290
Banyule (C)	10 290	44 244	18 455	21 190	16 350
Bass Coast (S)	5 067	10 835	5 561	5 862	4 125
Baw Baw (S)	3 354	6 366	3 936	3 303	3 948
Bayside (C)	29 861	58 045	16 865	30 431	17 814
Boroondara (C)	45 026	111 051	22 781	57 067	31 135
Brimbank (C)	10 848	127 090	28 699	46 378	31 000
Buloke (S)	—	—	85	—	40
Campaspe (S)	2 515	5 618	3 650	2 297	3 471
Cardinia (S)	3 814	5 231	4 016	2 533	3 416
Casey (C)	30 708	209 633	24 612	68 566	66 238
Central Goldfields (S)	352	1 984	1 482	971	981
Colac-Otway (S)	13 143	21 682	1 661	12 214	2 880
Corangamite (S)	3 725	4 032	2 572	2 525	1 751
Darebin (C)	21 623	59 613	16 225	33 164	17 321
Delatite (S)	2 094	8 265	1 689	4 242	3 134
East Gippsland (S)	3 164	4 085	7 178	1 250	4 770
Frankston (C)	29 130	40 201	20 577	23 566	11 069
Gannawarra (S)	1 445	2 091	57	1 381	625
Glen Eira (C)	4 683	55 751	12 527	22 965	16 036
Glenelg (S)	133	5 325	56	3 778	815
Golden Plains (S)	1 343	1 230	257	1 134	281
Greater Bendigo (C)	5 133	14 136	6 440	6 380	8 779
Greater Dandenong (C)	17 330	66 586	32 160	20 605	23 610
Greater Geelong (C)	19 509	68 803	16 035	33 167	22 598
Greater Shepparton (C)	8 369	18 905	8 794	9 220	11 694
Hepburn (S)	58	406	1 031	208	779
Hindmarsh (S)	—	72	251	27	51
Hobsons Bay (C)	10 752	26 714	15 836	14 738	13 332
Horsham (RC)	465	10 665	1 982	2 902	3 945
Hume (C)	48 526	157 902	30 628	50 586	43 499
Indigo (S)	869	1 857	990	600	1 126
Kingston (C)	21 707	259 524	17 373	36 422	23 218
Knox (C)	35 613	55 757	15 559	31 788	19 770
Latrobe (C)	3 297	4 383	3 510	1 999	3 227
Loddon (S)	189	3 940	—	590	1 690
Macedon Ranges (S)	3 343	5 842	3 298	2 383	2 912
Manningham (C)	10 585	31 604	26 373	13 662	14 364
Maribymong (C)	5 647	70 913	18 508	27 176	24 904
Maroondah (C)	9 730	27 222	18 124	9 038	14 550
Melbourne (C)	438 108	2 161 045	180 280	1 135 459	343 823
Melton (S)	7 045	10 507	3 231	5 812	4 331
Mildura (RC)	1 088	9 856	11 664	4 594	5 480
Mitchell (S)	2 469	3 250	806	1 925	1 559
Moira (S)	1 855	24 005	1 945	5 554	3 795
Monash (C)	89 438	149 333	19 641	86 658	40 735
Moonee Valley (C)	19 423	59 016	14 497	30 605	15 472
Moorabool (S)	528	2 784	1 048	1 551	1 354
Moreland (C)	15 233	48 621	18 728	20 497	16 274
Mornington Peninsula (S)	5 745	29 134	8 580	7 987	10 517
Mount Alexander (S)	125	5 526	65	2 394	1 643
Moyne (S)	11 313	11 336	593	6 485	4 946
Murrindindi (S)	3 839	4 398	660	3 610	828
Nillumbik (S)	4 410	14 966	1 299	7 174	4 545
Northern Grampians (S)	876	3 069	387	1 167	1 000
Port Phillip (C)	173 164	562 565	48 169	321 713	103 540
Pyrenees (S)	630	1 025	—	546	421

...continued

Local Government Area	Value of building commenced \$'000	Value of building under construction at end of quarter \$'000	Value of building completed \$'000	Value of work yet to be done at end of quarter \$'000	Value of work done \$'000
Queenscliffe (B)	502	853	236	507	147
South Gippsland (S)	6 257	7 377	2 175	5 420	1 790
Southern Grampians (S)	634	3 899	2 460	1 399	2 057
Stonnington (C)	63 430	302 635	48 996	126 997	67 849
Strathbogrie (S)	—	214	2 052	39	306
Surf Coast (S)	180	11 734	3 153	4 837	2 948
Swan Hill (RC)	1 472	2 656	1 877	375	2 647
Towong (S)	—	—	699	—	141
Wangaratta (RC)	1 418	21 204	1 624	10 729	4 353
Warrnambool (C)	2 674	7 439	2 983	2 130	5 093
Wellington (S)	386	285	503	88	445
West Wimmera (S)	—	1 999	—	99	397
Whitehorse (C)	48 237	105 575	25 746	56 696	24 620
Whittlesea (C)	14 371	78 349	9 787	22 123	24 352
Wodonga (RC)	1 298	23 043	10 557	13 789	7 714
Wyndham (C)	11 734	36 494	26 307	12 839	15 467
Yarra (C)	66 882	108 521	48 764	64 023	34 889
Yarra Ranges (S)	19 694	46 811	15 590	21 979	16 289
Yarriambiack (S)	128	64	128	45	136
Unincorporated Vic.	—	—	—	—	—
Victoria	1 449 600	5 516 212	943 784	2 618 136	1 258 805

Source: ABS data available on request, Building Activity.

Period	Original series							Seasonally adjusted	Trend estimates	% change from previous period
	Total (excl. motorcycles)						Motorcycles and scooters			
	Passenger vehicles	Light commercial vehicles	Trucks and buses	Melbourne	Other areas(b)	Victoria				
no.	no.	no.	no.	no.	no.	no.	no.	no.	no.	
1998–1999	177 754	23 015	5 694	159 715	46 748	206 463	8 601	206 411	206 454	7.8
1999–2000	164 544	25 233	5 769	150 803	44 743	195 546	9 613	196 357	195 223	-5.4
2000–2001	189 822	23 600	5 606	172 694	46 334	219 028	10 205	220 932	217 837	11.6
2000										
May	13 689	2 350	448	12 525	3 962	16 487	878	15 756	15 643	-1.1
June	11 681	2 924	469	10 768	4 306	15 074	697	12 014	15 493	-1.0
July	18 725	1 782	530	17 182	3 855	21 037	771	21 604	17 906	15.6
August	17 394	1 987	497	15 795	4 083	19 878	849	18 682	18 105	1.1
September	15 037	1 718	442	13 692	3 505	17 197	889	18 105	18 520	2.3
October	16 243	1 896	490	14 972	3 657	18 629	1 001	18 870	18 910	2.1
November	17 408	1 901	550	15 816	4 043	19 859	974	18 548	19 106	1.0
December	18 508	1 993	441	16 703	4 239	20 942	904	21 186	19 026	-0.4
2001										
January	13 088	1 645	312	11 768	3 277	15 045	797	19 108	18 619	-2.1
February	13 683	1 851	406	12 377	3 563	15 940	712	16 646	18 050	-3.1
March	15 062	2 040	435	13 600	3 937	17 537	942	16 243	17 576	-2.6
April	13 550	1 834	420	12 298	3 506	15 804	782	18 577	17 319	-1.5
May	15 505	2 271	587	14 301	4 062	18 363	839	17 464	17 300	-0.1
June	15 619	2 682	496	14 190	4 607	18 797	745	15 899	17 400	0.6
July	16 826	2 232	509	15 323	4 244	19 567	718	19 329	17 712	1.8

(a) Excludes plant & equipment, caravans and trailers.

(b) Includes Balance of Victoria and out of State registrations.

Source: ABS data available on request, New Motor Vehicle Registrations.

Local Government Area	3 months ended								% change from 3 months ended July 2000 to 3 months ended July 2001
	1999- 2000	2000- 2001	Apr 2000	Jul 2000	Oct 2000	Jan 2001	Apr 2001	Jul 2001	
Alpine (S)	357	406	58	118	108	95	97	100	-15
Ararat (RC)	324	339	67	93	81	96	76	89	-4
Ballarat (C)	2 739	3 028	668	750	702	761	781	832	11
Banyule (C)	3 537	4 010	919	930	997	1 049	900	1 032	11
Bass Coast (S)	580	653	143	183	162	164	143	175	-4
Baw Baw (S)	1 026	1 051	270	274	213	287	275	314	15
Bayside (C)	3 635	4 502	895	1 036	1 098	1 121	1 070	1 106	7
Boroondara (C)	7 501	8 477	1918	2 213	2 177	2 122	1 883	2 014	-9
Brimbank (C)	3 488	4 287	829	888	1 181	1 090	951	1 054	19
Buloke (S)	279	269	78	66	58	73	88	57	-14
Campaspe (S)	1 118	1 246	241	298	295	299	297	358	20
Cardinia (S)	1 343	1 410	344	346	387	349	297	418	21
Casey (C)	4 650	5 655	1207	1 240	1 453	1 362	1 368	1 420	15
Central Goldfields (S)	313	329	73	85	95	84	80	82	-4
Colac-Otway (S)	575	635	151	164	163	162	155	168	2
Corangamite (S)	482	492	112	142	112	120	117	149	5
Darebin (C)	3 271	6 317	774	994	1 458	1 492	1 603	2 313	133
Delatite (S)	660	622	167	207	141	153	135	197	-5
East Gippsland (S)	1 248	1 229	312	355	281	322	281	369	4
Frankston (C)	3 206	3 624	803	879	866	899	878	931	6
Gannawarra (S)	452	426	99	133	88	102	107	133	—
Glen Eira (C)	3 895	4 904	1003	1 108	1 251	1 402	1 056	1 114	1
Glenelg (S)	623	544	151	156	101	133	143	177	13
Golden Plains (S)	319	344	73	108	77	106	80	92	-15
Greater Bendigo (C)	2 274	2 591	565	658	591	661	569	782	19
Greater Dandenong (C)	5 171	6 108	1213	1 453	1 584	1 421	1 364	1 513	4
Greater Geelong (C)	6 903	7 592	1676	1 662	1 837	1 990	1 740	2 087	26
Greater Shepparton (C)	1 871	2 122	456	505	536	491	501	581	15
Hepburn (S)	352	416	95	97	105	92	93	131	35
Hindmarsh (S)	217	210	68	45	42	50	67	61	36
Hobsons Bay (C)	2 261	2 587	560	597	685	633	587	662	11
Horsham (RC)	668	638	149	179	138	136	190	191	7
Hume (C)	10 280	12 871	2049	2 281	3 305	4 291	2 268	2 659	17
Indigo (S)	388	422	100	101	115	102	107	108	7
Kingston (C)	4 962	4 942	1205	1 182	1 283	1 236	1 152	1 234	4
Knox (C)	4 961	5 733	1245	1 259	1 494	1 483	1 337	1 314	4
Latrobe (C)	2 530	2 647	565	604	659	596	713	667	10
Loddon (S)	249	226	62	69	36	55	67	80	16
Macedon Ranges (S)	1 103	1 202	259	281	281	285	321	345	23
Manningham (C)	4 206	5 450	1081	1 123	1 329	1 357	1 363	1 365	22
Maribymong (C)	2 067	2 865	464	504	601	667	776	957	90
Maroondah (C)	3 472	3 880	845	930	966	932	931	961	3
Melbourne (C)	17 385	15 272	3916	4 295	4 611	3 931	3 084	3 379	-21
Melton (S)	1 308	1 582	341	406	433	360	339	387	-5
Mildura (RC)	1 746	1 577	426	490	387	368	370	467	-5
Mitchell (S)	841	853	207	212	219	210	204	243	15
Moirā (S)	725	799	149	218	181	191	189	248	14
Monash (C)	8 619	10 586	2085	2 497	2 661	2 836	2 213	2 475	-1
Moonee Valley (C)	3 250	4 028	819	887	963	1 004	970	1 045	18
Moorabool (S)	655	745	163	163	209	184	160	223	37
Moreland (C)	4 817	5 377	1151	1 177	1 379	1 330	1 247	1 494	27
Mornington Peninsula (S)	3 981	4 491	965	1 063	1 112	1 084	1 072	1 194	12
Mount Alexander (S)	384	363	103	114	87	92	74	102	-11
Moyne (S)	496	504	132	144	114	116	121	150	4
Murrindindi (S)	453	519	107	125	135	96	139	171	37
Nillumbik (S)	1 823	1 934	497	488	493	466	452	506	4
Northern Grampians (S)	355	398	85	97	83	101	102	108	11
Port Phillip (C)	16 832	17 248	3663	5 265	4 711	4 297	3 310	4 607	-12
Pyrenees (S)	183	180	49	55	34	44	50	55	—
Queenscliffe (B)	119	119	30	39	27	26	29	36	-8
South Gippsland (S)	823	805	167	178	141	153	152	182	2
Southern Grampians (S)	616	620	204	239	177	199	203	261	9

For footnotes see end of table.

...continued

Local Government Area	3 months ended								% change from 3 months ended July 2000 to 3 months ended July 2001
	1999–2000	2000–2001	Apr 2000	Jul 2000	Oct 2000	Jan 2001	Apr 2001	Jul 2001	
Stonnington (C)	4 068	4 742	1068	1 027	1 167	1 115	1 161	1 263	23
Strathbogie (S)	305	299	79	81	61	83	74	94	16
Surf Coast (S)	680	731	160	170	176	202	156	217	28
Swan Hill (RC)	748	656	173	209	135	163	161	231	11
Towong (S)	199	205	47	60	45	54	39	64	7
Wangarratta (RC)	951	908	234	270	234	228	210	241	-11
Warrnambool (C)	884	1 122	203	250	282	292	251	310	24
Wellington (S)	1 359	1 332	312	389	350	330	312	372	-4
West Wimmera (S)	180	165	45	43	29	43	55	52	21
Whitehorse (C)	5 558	6 118	1405	1 380	1 529	1 556	1 417	1 562	13
Whittlesea (C)	2 782	3 170	702	741	854	731	710	808	9
Wodonga (RC)	1 254	1 349	319	352	333	341	340	337	-4
Wyndham (C)	2 535	3 298	634	710	844	838	703	918	29
Yarra (C)	3 908	3 509	850	869	857	907	811	980	13
Yarra Ranges (S)	3 877	4 181	997	1 033	1 070	1 056	943	1 055	2
Yarriambiack (S)	281	263	80	80	52	81	69	60	-25
Out of State and Unincorporated Victoria(d)	1 943	1 677	526	489	399	416	380	437	-11
Victoria	196 482	219 028	47 107	52 598	55 704	55 846	49 281	56 727	8

(a) Excludes motorcycles, plant & equipment, caravans and trailers.

(b) Caution should be used in the interpretation of these figures, as the series was noticeably affected by the introduction of the New Tax System on 1 July 2000.

(c) Registrations are coded by postcode of owner. Totals for local government areas are then estimated based on the proportion of each postcode in each local government area.

(d) Includes registrations of vehicles within Victoria where the owner resides outside of Victoria, and registrations where the owner resides within Victoria, but not within the boundaries of any local government area.

Source: ABS data available on request, New Motor Vehicle Registrations.

Month									Total
	Food retailing	Department stores	Clothing and soft good retailing	Household good retailing	Recreational good retailing	Other retailing	Hospitality and services		% change from previous month
	\$m	\$m	\$m	\$m	\$m	\$m	\$m	\$m	
ORIGINAL									
2000									
June	1 173.5	298.6	279.7	416.3	124.1	313.6	399.9	3 005.8	5.1
July	1 211.9	202.4	173.1	316.4	115.5	294.2	394.1	2 707.6	-9.9
August	1 236.0	234.6	189.4	340.4	124.0	315.0	414.1	2 853.6	5.4
September	1 216.2	245.9	193.9	341.3	130.7	311.2	408.4	2 847.6	-0.2
October	1 253.7	264.7	202.4	353.7	124.5	354.3	418.4	2 971.6	4.4
November	1 296.2	302.9	240.8	385.8	136.9	375.1	425.2	3 163.0	6.4
December	1 515.4	543.4	350.2	481.6	207.5	504.7	480.6	4 083.3	29.1
2001									
January	1 309.7	240.0	212.4	366.5	141.2	312.4	428.0	3 010.1	-26.3
February	1 228.9	202.0	182.3	336.7	117.2	317.8	411.2	2 796.0	-7.1
March	1 365.9	261.7	228.7	361.7	130.3	341.8	475.0	3 165.1	13.2
April	1 299.1	259.1	227.7	358.2	119.8	333.6	456.3	3 053.8	-3.5
May	1 301.8	269.0	231.4	389.6	131.7	374.6	461.8	3 159.9	3.5
June	1 261.3	256.4	222.4	421.3	133.2	357.5	466.7	3 118.7	-1.3
July	1 284.7	270.6	216.2	417.7	134.3	387.1	488.0	3 198.5	2.6
August	1 338.9	227.1	205.2	425.7	138.3	395.3	492.6	3 223.1	0.8

For footnotes see end of table.

...continued

Month								Total	
	Food retailing	Department stores	Clothing and soft good retailing	Household good retailing	Recreational good retailing	Other retailing	Hospitality and services	\$m	% change from previous month
	\$m	\$m	\$m	\$m	\$m	\$m	\$m	\$m	
SEASONALLY ADJUSTED(b)									
2000									
June	1217.4	333.8	286.3	438.8	136.8	337.0	415.5	3165.6	7.4
July	1237.3	211.5	179.1	335.4	126.4	305.6	402.1	2797.2	-11.6
August	1247.8	276.9	207.1	353.1	129.8	317.1	422.4	2954.2	5.6
September	1247.5	266.2	210.3	351.3	131.5	307.5	410.2	2924.6	-1.0
October	1256.4	277.3	211.7	348.1	128.3	343.5	417.4	2982.6	2.0
November	1266.2	268.3	224.7	365.6	127.9	352.5	421.2	3026.4	1.5
December	1292.0	279.2	234.5	362.6	132.5	350.8	415.8	3067.5	1.4
2001									
January	1302.8	281.1	228.2	359.6	138.3	354.9	432.8	3097.6	1.0
February	1324.7	283.3	232.8	373.1	133.7	378.5	449.0	3175.0	2.5
March	1332.8	288.6	239.3	385.0	136.7	352.7	459.7	3194.7	0.6
April	1352.0	279.1	229.6	391.8	137.9	358.1	462.4	3210.7	0.5
May	1326.6	275.6	221.9	399.9	144.7	390.4	470.9	3229.9	0.6
June	1327.9	288.1	227.3	443.4	143.5	381.0	489.8	3300.8	2.2
July	1326.1	288.3	224.4	436.2	149.2	398.6	498.6	3321.5	0.6
August	1333.4	273.5	224.1	437.8	144.6	395.5	491.5	3300.3	-0.6
TREND ESTIMATES(b)(c)									
2000									
June	1 221.4	273.6	222.6	353.2	135.8	321.8	408.3	2 931.9	0.3
July	1 231.9	271.2	211.1	351.5	129.6	315.3	418.2	2 922.3	-0.3
August	1 240.7	271.3	210.5	351.8	129.6	322.3	415.5	2 937.1	0.5
September	1 250.2	271.5	211.9	352.9	129.8	330.0	414.6	2 957.3	0.7
October	1 260.8	272.6	215.9	354.5	130.2	338.7	415.6	2 985.5	1.0
November	1 273.9	275.0	221.8	357.2	130.9	347.4	419.0	3 022.4	1.2
December	1 289.4	277.8	227.8	361.2	132.1	355.1	425.1	3 065.3	1.4
2001									
January	1 305.9	280.1	231.8	366.4	133.6	361.3	433.6	3 108.7	1.4
February	1 320.7	281.9	233.3	373.2	135.6	366.2	443.9	3 150.7	1.4
March	1 330.1	283.0	232.4	381.9	137.8	370.8	455.1	3 188.2	1.2
April	1 334.0	283.2	230.3	392.5	140.0	375.7	466.0	3 221.1	1.0
May	1 334.2	282.8	228.0	404.2	142.1	380.9	475.7	3 250.9	0.9
June	1 333.2	282.3	226.1	415.8	144.1	386.2	484.2	3 277.7	0.8
July	1 331.8	281.7	224.6	426.5	145.8	391.2	491.3	3 300.5	0.7
August	1 329.7	280.8	223.1	435.1	147.3	394.8	496.5	3 316.1	0.5

(a) Excludes motor vehicles, parts, petrol, etc.

(b) The seasonally adjusted and trend series have been updated following the normal annual review of the seasonal adjustment processes. The review did not result in any significant change to the methods of adjustment of the series. However, an additional feature has been included in the seasonal adjustment process to take account of the variable timing of Easter. This improvement impacts on the estimates for March and April in some years. For more detail, see the Appendix, *Retail Trade, Australia* (Cat. no. 8501.0), July 2001.

(c) A break in the trend series occurred between June and July 2000 because of the impact of the New Tax System on retail turnover.

Source: *Retail Trade, Australia* (Cat. no. 8501.0).

Quarter ended	Original		Seasonally adjusted(c)		Trend estimates(c)	
	Victoria	Australia	Victoria	Australia	Victoria	Australia
TURNOVER (\$m)						
2000						
March	8 399.2	34 806.7	8 832.3	36 529.2	8 892.2	36 734.2
June	8 579.5	35 834.9	9 003.3	37 480.2	8 710.5	36 556.8
September	8 156.7	35 189.0	8 425.6	36 132.6	8 644.8	36 554.9
December	9 870.9	40 987.8	8 748.7	36 697.8	8 765.8	36 846.9
2001						
March	8 533.0	35 482.3	8 997.5	37 346.1	8 966.3	37 246.2
June	8 817.5	36 243.4	9 206.0	37 726.1	9 181.1	37 691.5
PERCENTAGE CHANGE (FROM PREVIOUS QUARTER)						
2000						
March	-18.0	-15.8	-2.8	-1.4	-1.4	—
June	2.1	3.0	1.9	2.6	-2.0	-0.5
September	-4.9	-1.8	-6.4	-3.6	-0.8	—
December	21.0	16.5	3.8	1.6	1.4	0.8
2001						
March	-13.6	-13.4	2.8	1.8	2.3	1.1
June	3.3	2.1	2.3	1.0	2.4	1.2
PERCENTAGE CHANGE (FROM SAME QUARTER OF PREVIOUS YEAR)						
2000						
March	4.5	3.0	3.8	2.2	4.9	3.9
June	2.7	4.3	3.1	4.6	-0.7	1.4
September	-6.6	-1.1	-6.6	-1.1	-3.7	0.0
December	-3.6	-0.9	-3.7	-0.9	-2.8	0.3
2001						
March	1.6	1.9	1.9	2.2	0.8	1.4
June	2.8	1.1	2.3	0.7	5.4	3.1

(a) Excludes motor vehicles, parts, petrol, etc.

(b) Reference year for chain volume measures is 1999–2000.

(c) The seasonally adjusted and trend series have been updated following the normal annual review of the seasonal adjustment processes. The review did not result in any significant change to the methods of adjustment of the series. However, an additional feature has been included in the seasonal adjustment process to take account of the variable timing of Easter. This improvement impacts on the estimates for March and April in some years. For more detail, see the Appendix, *Retail Trade, Australia* (Cat. no. 8501.0), July 2001.

Source: *Retail Trade, Australia* (Cat. no. 8501.0).

40

TOURIST ACCOMMODATION

<i>Hotels, motels, guest houses and serviced apartments(a)</i>								
<i>Quarter ended</i>	<i>Establish-ments</i>	<i>Guest rooms</i>	<i>Bed spaces</i>	<i>Persons employed</i>	<i>Room nights occupied</i>	<i>Room occupancy rate</i>	<i>Guest nights occupied</i>	<i>Takings from accommodation</i>
<i>no.</i>	<i>no.</i>	<i>no.</i>	<i>no.</i>	<i>no.</i>	<i>'000</i>	<i>%</i>	<i>'000</i>	<i>\$m</i>
1999								
September	698	30 934	85 483	21 780	1 589.4	56.0	2 642.8	184.1
December	705	31 317	86 058	21 633	1 672.7	58.1	2 772.6	191.6
2000								
March	707	31 332	86 134	21 498	1 773.4	62.3	2 982.4	213.0
June	705	31 384	86 372	21 586	1 628.9	57.1	2 655.9	185.3
September	703	31 158	85 719	21 784	1 608.7	56.2	2 663.8	207.4
December	701	31 155	85 238	21 700	1 698.9	59.4	2 838.7	217.3
2001								
March	706	32 023	87 185	21 890	1 787.2	62.1	3 054.5	241.4
June	705	32 295	87 866	22 008	1 619.6	55.1	2 699.3	202.6

(a) Comprising establishments with 15 or more rooms or units.

Source: *Tourist Accommodation, Australia (Cat. no. 8635.0)*.

41

TOURIST ACCOMMODATION, BY TOURISM REGION, JUNE QUARTER 2001

<i>Hotels, motels, guest houses and serviced apartments(a)</i>					
<i>Tourism region</i>	<i>Room occupancy rate</i>	<i>Guest nights</i>	<i>Guest arrivals</i>	<i>Average length of stay</i>	<i>Takings from accommodation</i>
	<i>%</i>	<i>'000</i>	<i>'000</i>	<i>days</i>	<i>\$'000</i>
Melbourne	64.7	1 820.5	783.3	2.3	158 445
Melbourne East	35.7	17.7	11.7	1.5	1 342
Peninsula	38.9	42.1	24.2	1.7	3 432
Geelong	44.2	52.2	31.0	1.7	3 331
Western	46.6	110.4	69.6	1.6	5 435
Western Grampians	47.8	33.2	25.5	1.3	1 716
Central Highlands	42.2	25.6	16.8	1.5	998
Ballarat	47.8	78.8	45.6	1.7	3 447
Macedon	40.5	3.3	2.0	1.6	295
Spa Country	49.5	9.1	6.3	1.4	777
Bendigo Loddon	53.1	65.5	43.2	1.5	3 222
Wimmera	38.4	6.5	4.8	1.3	240
Mallee	47.8	89.5	54.6	1.6	3 944
Central Murray	43.1	38.8	24.6	1.6	1 703
Goulburn	45.8	44.8	31.0	1.4	2 194
Upper Yarra	32.3	20.4	11.6	1.8	1 588
High Country	29.1	101.8	55.9	1.8	4 355
Murray East	44.2	21.6	13.8	1.6	875
Lakes	36.9	40.3	26.2	1.5	1 588
Gippsland	34.2	49.2	32.3	1.5	2 325
Phillip Island	36.9	28.1	16.0	1.8	1 302
Total Victoria	55.1	2 699.3	1 330.1	2.0	202 556

(a) Comprising establishments with 15 or more rooms or units.

Source: *Tourist Accommodation, Small Area Data, Victoria (Cat. no. 8635.2.40.001)*.

Period	Livestock slaughterings					Meat (carcass weight)				
	Cattle	Calves	Sheep	Lambs	Pigs	Beef	Veal	Mutton	Lamb	Pigmeat
	'000	'000	'000	'000	'000	tonnes	tonnes	tonnes	tonnes	tonnes
ORIGINAL										
1998-1999	1 751.3	714.4	3 079.6	6 699.4	1 572.8	398 815	14 225	61 646	128 380	114 582
1999-2000	1 523.8	678.5	3 816.0	7 144.5	1 443.7	351 273	13 370	76 719	140 215	106 690
2000-2001	1 492.8	608.9	4 089.8	7 965.7	1 065.6	347 920	11 842	81 965	155 540	78 954
2000										
June	131.3	74.0	289.6	654.9	107.2	29 732	1 397	5 797	12 955	8 119
July	108.6	82.8	272.2	620.1	93.8	25 181	1 534	5 791	12 311	7 077
August	127.6	189.8	304.9	704.1	103.4	29 353	3 638	6 555	14 079	7 875
September	114.5	111.8	288.5	624.8	80.1	26 829	2 268	5 989	12 304	6 047
October	129.5	51.9	347.2	735.5	84.2	31 100	991	7 414	14 161	6 174
November	135.4	13.8	370.7	765.0	90.4	32 630	281	7 827	14 895	6 735
December	121.0	5.7	282.0	632.7	86.8	27 544	131	5 931	12 171	6 758
2001										
January	134.4	6.0	382.4	675.9	84.7	31 525	138	7 673	13 000	6 260
February	135.6	5.2	406.4	654.8	83.6	31 995	115	7 755	12 925	5 975
March	131.8	14.0	418.6	672.1	90.5	30 517	283	7 699	13 056	6 499
April	110.1	19.4	307.0	592.3	87.3	24 948	378	5 761	11 309	6 424
May	136.9	46.8	397.8	705.8	95.9	31 783	900	7 597	13 912	6 846
June	107.3	61.7	312.2	582.6	84.8	24 515	1 184	5 973	11 419	6 284
July	111.2	77.8	305.9	538.1	88.6	26 320	1 476	5 978	10 384	6 694
August	112.8	165.1	265.1	582.5	95.9	26 941	3 169	5 243	11 401	7 577
SEASONALLY ADJUSTED										
2000										
June	131.6	54.3	355.8	692.7	101.9	31 127	1 084	7 221	13 771	7 565
July	121.2	56.0	355.3	668.6	92.2	28 479	1 074	7 336	13 076	6 882
August	132.7	53.9	369.8	692.5	100.5	31 286	1 065	8 087	13 870	7 629
September	131.3	47.7	339.2	613.5	85.5	31 107	951	6 837	12 202	6 351
October	128.3	46.8	314.8	685.6	87.8	30 457	917	6 310	13 236	6 335
November	124.3	35.4	313.6	665.6	90.8	29 382	655	6 383	12 895	6 787
December	127.0	41.3	280.9	656.4	88.2	28 502	762	5 908	12 771	7 057
2001										
January	123.6	43.9	328.2	666.1	89.2	28 389	772	6 514	12 701	6 658
February	126.4	44.4	335.1	683	91.7	29 234	779	6 546	13 388	6 707
March	124.6	48.6	355.4	679.5	88.3	28 723	884	6 844	13 235	6 412
April	122.8	44.5	345.8	664.8	87.4	27 974	837	6 688	13 020	6 409
May	121.4	48.6	396.6	667.8	83.5	28 545	946	7 982	12 939	5 931
June	115.8	49.8	400.9	650.3	84.5	27 270	983	7 739	12 801	6 162
July	117.9	47.3	387.1	551.2	84.5	28 345	960	7 425	10 407	6 322
August	118.2	51.7	315.9	581.2	93.6	28 771	1 005	6 280	11 480	7 316
TREND ESTIMATES										
2000										
June	128.2	56.4	351.9	656.7	103.4	29 959	1 106	7 229	13 055	7 691
July	129.0	54.2	354.2	666.9	97.7	30 354	1 066	7 325	13 237	7 280
August	129.2	51.2	348.8	669.7	93.3	30 514	1 009	7 236	13 243	6 964
September	128.8	47.8	337.0	667.4	90.5	30 406	936	6 989	13 118	6 772
October	128.0	44.7	323.7	663.9	89.1	30 096	861	6 678	12 966	6 690
November	127.1	42.5	313.6	663.0	88.8	29 646	798	6 400	12 881	6 689
December	126.4	41.7	310.7	666.1	89.1	29 220	763	6 257	12 902	6 711
2001										
January	125.6	42.4	316.8	672.6	89.3	28 847	761	6 307	12 985	6 688
February	124.6	43.9	332.3	677.3	88.9	28 556	789	6 556	13 083	6 586
March	123.6	45.7	351.3	675.1	88.0	28 413	836	6 885	13 124	6 442
April	122.2	47.0	366.4	664.6	86.8	28 313	883	7 149	13 058	6 313
May	120.6	47.9	374.8	647.5	86.2	28 219	921	7 305	12 901	6 284
June	119.1	48.7	376.7	626.2	86.2	28 161	953	7 347	12 670	6 346
July	117.9	49.4	373.6	604.4	86.6	28 161	981	7 295	12 413	6 469
August	116.8	50.1	367.8	583.8	87.4	28 178	1 002	7 192	12 132	6 615

Source: ABS data available on request, Monthly Livestock Collection.

	Units	Mar qtr 2000	Jun qtr 2000	Sep qtr 2000	Dec qtr 2000	Mar qtr 2001	Jun qtr 2001
Livestock products							
Milk							
Factory intake	million litres	1 697.1	1 030.9	1 666.3	2 482.0	1 552.4	1 089.3
Market sales by factories(b)	million litres	106.7	109.5	115.4	112.0	109.7	116.3
Milk products							
Cheese	tonnes	64 794	49 833	48 967	75 492	65 324	49 922
Whole milk powder	tonnes	56 944	21 024	51 408	74 246	48 942	27 588
Skim milk/buttermilk powder	tonnes	48 435	30 912	65 309	100 577	48 964	38 158
Butter/butteroil	tonnes	33 579	22 964	32 158	50 350	32 674	24 395
Wool receivals							
Original	tonnes	29 335	29 196	38 369	53 391	32 811	25 487
Seasonally adjusted	tonnes	38 252	46 622	36 084	34 255	43 077	41 203
Trend(c)	tonnes	39 546	40 388	38 952	37 942	39 336	41 956
Live sheep exports							
Quantity	number	213 583	91 267	—	220 658	353 767	329 316
Gross weight	tonnes	11 875	4 727	—	11 724	19 172	16 201
Chickens slaughtered							
Original	'000	26 500.3	26 200.7	26 285.8	26 591.2	25 761.2	24 175.0
Seasonally adjusted	'000	26 313.5	26 374.7	27 133.8	25 752.2	25 804.1	24 346.0
Trend	'000	26 474.2	26 604.1	26 592.0	26 153.7	25 433.6	24 650.2
Chicken meat							
Original	tonnes	42 363	42 511	42 735	46 915	41 874	42 698
Seasonally adjusted	tonnes	42 505	43 119	43 729	45 096	42 016	43 337
Trend	tonnes	42 517	43 371	43 910	43 816	43 351	42 855
Other products							
Electricity(d)	'000 megawatt hours	n.a.	11 306	10 405	11 117	11 776	11 756
Ready mixed concrete(e)(f)	'000 cubic metres	1 032	1 127	1 029	1 016	959	n.y.a.
Hardwood woodchips(e)(g)	'000 tonnes	50 834	59 672	44 063	48 952	29 416	n.y.a.

(a) Quarterly statistics on Victoria's production of gold, oil and gas are available in *Australian Mineral Statistics*, published by the Australian Bureau of Agricultural and Resource Economics.

(b) Original series.

(c) Trend estimates for the most recent quarters are subject to revision when data for the subsequent quarters become available.

(d) Total metered generation of all generators in Victoria.

(e) Compiled from the ABS manufacturing production collection. Excludes details relating to both single establishment manufacturing enterprises with fewer than four persons employed, and establishments predominantly engaged in non-manufacturing activities which may also undertake some limited manufacturing activity. However, the effect of these establishments on production levels and movements is usually marginal.

(f) ANZSCC 375.01.01. Reported production of ready mixed concrete for sale as such. Excludes production used, or for use, in the same business. (An improvement in coverage for Melbourne Statistical Division from June month 2000 contributed approximately a 4% increase in the June month 2000 production level for Victoria).

(g) ANZSCC 312.03.01. Expressed as greenweight; excludes chips which are not sold or are used in own works.

Source: *Australian Dairy Corporation*; ABS data available on request, livestock products; *National Electricity Market Management Company*: ABS data available on request, manufacturing production.

44

INTERNATIONAL MERCHANDISE TRADE(a), BY COMMODITY(b)(c)

Section and division of the SITC Rev3	1999–2000		2000–2001		Two months ended August 2001	
	Exports	Imports	Exports	Imports	Exports	Imports
	\$m	\$m	\$m	\$m	\$m	\$m
0 Food and live animals chiefly for food(d)(e)	4 426	1 357	5 772	1 430	1 007	245
1 Beverages and tobacco(d)(e)	187	141	228	211	42	36
2 Crude materials, inedible (except fuels)(d)(e)	1 580	625	2 163	677	321	101
3 Mineral fuels, lubricants, and related materials(e)	1 221	1 764	1 395	2 309	244	371
4 Animal and vegetable oils, fats and waxes(d)(e)	113	93	108	96	17	17
5 Chemicals and related products, n.e.c.(d)(e)	1 024	3 352	1 258	3 856	237	636
6 Manufacturing goods classified chiefly by material(d)(e)	2 681	4 648	2 902	4 773	484	837
7 Machinery and transport equipment(d)(e)	3 963	14 768	4 082	15 435	739	2734
8 Miscellaneous manufactured articles(d)(e)	1 162	5 835	1 403	6 205	256	1176
9 Commodities and transactions of merchandise trade, n.e.c.(f)						
97 Gold, non-monetary (excluding gold ores and concentrates)	1 965	203	1 940	335	281	44
98 Combined confidential items of trade	446	920	1 017	1 152	221	194
Other Section 9	265	9	243	8	47	2
Total Section 9	2 677	1 133	3 200	1 494	549	239
Total	19 034	33 717	22 509	36 487	3 896	6 394

(a) Victorian imports are those imported goods released from Customs control within Victoria. Victorian exports are those whose final stage of production or manufacture occurred within Victoria.

(b) Standard International Trade Classification.

(c) Any discrepancies between sums of the component items and totals are due to rounding.

(d) Excludes export commodities subject to a confidentiality restriction. These are included in Section 9.

(e) Excludes imports commodities subject to a confidentiality restriction. These are included in Section 9.

(f) Includes export and import commodities subject to a confidentiality restriction.

Source: ABS data available on request, International Merchandise Trade.

45

BALANCE OF INTERNATIONAL MERCHANDISE TRADE

Period	Victoria(a)			Australia				
	Exports	Imports	Excess of exports	Exports (including re-exports)	Imports	Excess of exports	Victoria exports as a proportion of Australia	Victoria imports as a proportion of Australia
	\$m	\$m	\$m	\$m	\$m	\$m	%	%
1998–1999	16 484	31 014	-14 530	85 991	97 611	-11 620	19.2	31.8
1999–2000	19 034	33 717	-14 683	97 286	110 078	-12 792	19.6	30.6
2000–2001	22 509	36 487	-13 978	119 555	118 255	1 300	18.8	30.9
2000								
June	1 564	2 976	-1 412	9 193	10 436	-1 243	17.0	28.5
July	1 640	2 908	-1 268	9 367	9 755	-388	17.5	29.8
August	1 763	3 319	-1 556	9 374	10 716	-1 342	18.8	31.0
September	1 852	3 041	-1 189	9 779	9 852	-73	18.9	30.9
October	2 205	3 442	-1 237	10 551	11 154	-603	20.9	30.9
November	1 949	3 443	-1 494	10 431	11 006	-575	18.7	31.3
December	1 836	2 819	-983	10 294	9 250	1 044	17.8	30.5
2001								
January	1 485	2 882	-1 397	8 327	9 230	-903	17.8	31.2
February	1 903	2 711	-808	9 223	8 322	901	20.6	32.6
March	2 073	3 076	-1 003	10 576	9 932	644	19.6	31.0
April	1 835	2 955	-1 120	10 305	9 574	731	17.8	30.9
May	1 986	3 073	-1 087	10 682	9 985	697	18.6	30.8
June	1 983	2 819	-836	10 646	9 477	1 169	18.6	29.7
July	1 902	2 973	-1 071	10 591	9 648	943	18.0	30.8
August	1 994	3 421	-1 427	10 539	10 542	-3	18.9	32.5

(a) Victorian imports are those imported goods released from Customs control within Victoria. Victorian exports are those whose final stage of production or manufacture occurred within Victoria.

Source: International Merchandise Trade: Fastraccs Database August 2001.

Country	1999–2000		2000–2001		Two months ending August 2001	
	Exports \$m	Imports \$m	Exports \$m	Imports \$m	Exports \$m	Imports \$m
Belgium-Luxembourg	110	258	168	275	26	44
Brazil	46	105	70	123	10	22
Canada	135	445	195	412	34	59
China	1 124	3 029	1 430	3 891	240	764
Fiji	286	194	361	142	53	24
Finland	9	187	10	227	2	40
France	136	622	156	748	25	143
Germany	397	2 402	507	2 585	69	520
Hong Kong (SAR of China)	945	403	1 062	408	162	89
India	193	262	220	291	53	57
Indonesia	295	893	391	1 049	97	242
Italy	332	1 036	464	1 028	79	204
Japan	1 860	4 416	2 247	4 828	366	858
Korea, Republic of (South)	1 236	870	1 308	1 065	226	137
Malaysia	514	1 118	531	1 037	90	174
Mexico	74	111	157	130	24	21
Netherlands	105	318	150	302	21	55
New Zealand	2 297	1 491	1 875	1 535	339	332
Pakistan	56	85	76	112	9	13
Papua New Guinea	139	67	145	22	23	2
Philippines	385	163	474	175	86	29
Saudi Arabia	704	221	1 206	314	287	24
Singapore	1 475	632	1 517	685	221	114
South Africa	229	166	204	208	38	42
Sweden	29	607	28	541	7	62
Switzerland	40	319	47	342	9	69
Taiwan	835	922	816	959	93	158
Thailand	439	673	491	802	106	138
United Kingdom	694	1 793	696	1 842	93	310
United States of America	1 630	7 701	2 073	7 379	400	1185
Other and unknown	2 286	2 205	3 431	3 029	608	463
Total(c)	19 034	33 717	22 509	36 487	3 896	6 394

(a) Victorian imports are those imported goods released from Customs control within Victoria. Victorian exports are those whose final stage of production or manufacture occurred within Victoria.

(b) The list of countries in this table reflects the volume of trade with Victoria.

(c) Any discrepancies between sums of component items and the total are due to rounding.

Source: ABS data available on request, International Merchandise Trade.

	Proportion of days per quarter with Air Quality Index(a) at stated level(b)							
	1999(c)				2000(c)			
	Mar	Jun	Sept	Dec	Mar	Jun	Sept	Dec
	%	%	%	%	%	%	%	%
West(d)								
Very Good	34	40	39	43	44	45	35	38
Good	44	40	48	50	47	41	49	54
Fair	16	14	11	5	8	7	13	7
Poor	4	7	2	—	—	4	1	1
Very Poor	1	—	—	1	1	3	2	—
East(d)								
Very Good	33	18	22	55	46	27	38	63
Good	49	48	53	42	46	47	32	34
Fair	18	24	17	2	7	12	15	3
Poor	—	9	5	—	—	10	11	—
Very Poor	—	1	2	—	1	3	4	—
City(d)								
Very Good	51	34	55	70	54	57	73	80
Good	40	49	34	26	43	32	23	18
Fair	6	9	9	4	2	5	2	1
Poor	3	8	2	—	1	3	1	—
Very Poor	—	—	—	—	—	2	1	—
Geelong(d)								
Very Good	71	46	58	75	68	67	64	71
Good	24	35	29	24	32	24	29	29
Fair	4	16	13	1	—	2	7	—
Poor	—	2	—	—	—	5	—	—
Very Poor	—	—	—	—	—	1	—	—
Latrobe Valley(d)								
Very Good	37	20	17	76	47	15	27	59
Good	54	41	55	23	49	56	50	41
Fair	7	24	20	—	1	21	20	—
Poor	2	14	4	—	2	7	3	—
Very Poor	—	1	3	1	—	1	—	—

- (a) The EPA reports air quality as an index for any given pollutant as its concentration expressed as a percentage of the relevant standard. It enables easy interpretation of whether the pollutant is at a level which may cause harm. An index value of 100 means the pollutant is currently at a concentration equal to the National Environment Protection Measure (Air NEPM) or State Environment Protection Policy (The Air Environment) (SEPP) standard levels (levels designed to protect human health and the environment). Indexes are calculated separately for each measured pollutant: Ozone, Nitrogen Dioxide, Sulfur Dioxide, Carbon Monoxide, Fine Particulates (PM10), Visibility (Airborne Particle Index). Note that not all pollutants are measured at each station. The station index is the maximum of these individual indexes.
- (b) The index is converted into a qualitative scale with five commonly understood terms Very Good (0–33), Good (34–66) and Fair (67–99), (which represent measurements within the health standards) while Poor (100–149) and Very Poor (150+) represent measurements exceeding the health standards.
- (c) Indexes provided for 1999 have been calculated using the full suite of pollutants listed above. The calculations for the year 2000 have only been done using pollutant indexes for Ozone and API (Airborne Particle Index). These, however, are the dominant pollutants and are widely measured across the EPA network. Therefore while the data is not directly comparable across years the major trends should be similar. It should also be noted that meteorological conditions are a major determinant on the incidence of elevated pollutant levels. Hence significant daily, seasonal and annual variations can be expected in air quality. For more information on Air Quality, see the EPA website — <www.epa.vic.gov.au>
- (d) For reporting purposes the Port Phillip Region (PPR) has been divided into four regions: East, West, City and Geelong. Air monitoring stations assigned to each region are: East — Alphington, Brighton, Box Hill, Dandenong; City — RMIT, Richmond; West — Footscray, Mount Cottrell, Point Cook, Paisley; Geelong — Point Henry, Geelong South. In addition, the Latrobe Valley has stations at Moe and Traralgon. The regional index is considered to be the maximum of the station indexes calculated within each particular region. The daily index reported for a region is the maximum region index recorded each day.

Source: Environment Protection Authority, Victoria.

Basin	Capacity at full service level ML	Storage levels (percent of capacity)						% change from	
		Jul 2000	Aug 2000	Sep 2000	Jul 2001	Aug 2001	Sep 2001	Aug 2001 to Sep 2001	Sep 2000 to Sep 2001
Goulburn	3 833 500	28.8	36.4	46.6	34.5	39.7	42.5	7.1	-8.9
Broken	405 000	49.0	62.8	74.5	55.3	58.3	62.1	6.6	-16.6
Campaspe	387 060	37.7	44.0	61.6	64.6	65.7	66.7	1.6	8.3
Loddon	284 300	40.7	47.2	59.5	55.6	59.8	59.0	-1.3	-0.9
Murray	7 113 210	59.8	74.7	81.8	66.7	72.0	77.8	8.1	-4.8
Ovens	37 500	80.4	77.9	76.8	74.5	76.7	81.9	6.8	6.7
Werribee	76 020	39.6	43.7	59.2	65.1	72.0	76.0	5.5	28.2
Maribymong	24 900	9.2	9.8	12.9	31.9	33.1	33.5	1.2	159.6
Glenelg / Wimmera	770 410	13.5	13.2	16.4	11.4	14.1	21.1	49.7	28.5
Thomson / Latrobe	1 466 200	49.0	54.3	60.8	48.5	54.5	60.0	10.2	-1.4
Total	14 398 100	46.5	57.2	65.3	52.7	57.7	62.4	8.2	-4.5
Total Volume of Water									
In Melbourne Water storages(a)	1 772 500	51.3	53.5	57.8	49.6	52.3	54.7	4.5	-6.4
In rural water authority storages(b)	9 773 495	42.1	52.2	61.2	48.5	53.8	58.3	8.5	-4.7

(a) The total volume in Melbourne Water storages is calculated as the sum of volumes in store in Thomson, Upper Yarra, O'Shannassy, Maroondah, Sugarloaf, Yan Yean, Greenvale, Silvan and Cardinia (Tarago and Devil bend are excluded).

(b) The total volume in rural water authority storages is calculated (as an approximation) as the sum of volumes in store for all listed storages, minus the volume in Thomson reservoir, minus half of the volume stored in the Murray Basin.

Source: Department of Natural Resources and Environment website, <www.nre.vic.gov.au/vro>.

FOR MORE INFORMATION...

- INTERNET* **www.abs.gov.au** the ABS web site is the best place to start for access to summary data from our latest publications, information about the ABS, advice about upcoming releases, our catalogue, and Australia Now—a statistical profile.
- LIBRARY* A range of ABS publications is available from public and tertiary libraries Australia-wide. Contact your nearest library to determine whether it has the ABS statistics you require, or visit our web site for a list of libraries.
- CPI INFOLINE* For current and historical Consumer Price Index data, call 1902 981 074 (call cost 77c per minute).
- DIAL-A-STATISTIC* For the latest figures for National Accounts, Balance of Payments, Labour Force, Average Weekly Earnings, Estimated Resident Population and the Consumer Price Index call 1900 986 400 (call cost 77c per minute).

INFORMATION SERVICE

Data which have been published and can be provided within five minutes are free of charge. Our information consultants can also help you to access the full range of ABS information—ABS user-pays services can be tailored to your needs, time frame and budget. Publications may be purchased. Specialists are on hand to help you with analytical or methodological advice.

- PHONE* **1300 135 070**
- EMAIL* **client.services@abs.gov.au**
- FAX* 1300 135 211
- POST* Client Services, ABS, GPO Box 796, Sydney 1041

WHY NOT SUBSCRIBE?

ABS subscription services provide regular, convenient and prompt deliveries of ABS publications and products as they are released. Email delivery of monthly and quarterly publications is available.

- PHONE* 1300 366 323
- EMAIL* subscriptions@abs.gov.au
- FAX* 03 9615 7848
- POST* Subscription Services, ABS, GPO Box 2796Y, Melbourne 3001



2136720009011
ISSN 1445-6710

RRP \$23.00